

BACK to basics

NAIL TIP APPLICATION



Alisha Rimando



Alisha Rimando is recognized as one of the nail industry's leading experts in training and education. In her 28 years experience, her work has been described as "ground-breaking" as she has been a platform artist and motivational speaker for thousands of promotional and educational events, and competed in hundreds of nail competitions around the globe winning the *World Nail Championship* in 2005 in *Pink and White Sculptured Nails*. She is the featured artist in many training videos, including hosting the current *Milady Standard Nail Technology* DVD Series.

In this workbook you will learn how to choose the right sized tip for your client. You're going to learn how to customize tips to give you, not only the right fit, but the customized look you want that will have your client coming back for more. Then I will show you how to shape and blend the tips to provide the perfect foundation for any overlay service your client requests. So, grab your tips and let's get back to basics.

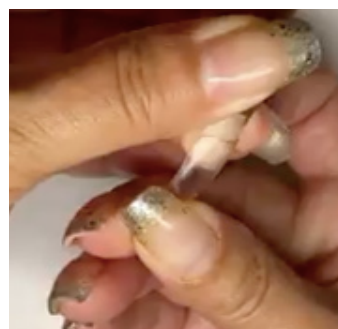
WHAT YOU NEED

Tips of your choice full-well, half-well and no-well. Resin or nail tip glue, and 180/150-grit file.

Alisha's expertise and application techniques have been featured in more than 150 beauty and trade publications and blog spots world wide such as *Teen Vogue*, *Bridal Guide*, *Self*, *Fitness*, and *Seventeen* magazines, as well as numerous industry trade magazines like *Nails*, *Nailpro*, *Scratch (UK)* and *Stylish Nail (Japan)*. Her career took an additional leap in 2008 when she became a published author for Cengage Learning, contributing to *Milady Nail Technology* and *Standard Cosmetology* textbooks, a consistent honor she engages with each new edition.

Through the years, Alisha has worked with R&D chemists to develop nail enhancement products, nano technology skincare, cuticle treatments, polish collections and natural nail treatments. Alisha's artistic creations have been sought after for numerous ads and campaigns as well as garnered celebrity status being featured with Jennifer Hudson in her video "Spotlight" and leading teams at NYC Fashion Weeks.

Her passion for educating the nail community takes her on another adventure with the conception and development of GlossaryLive.com



1 Start by sizing the nail tip. Lay the tip onto the natural nail and rock it from one side of the finger to the other for a proper fit. There should be no gaps or glitches between the nail bed groove and the line of the nail tip where it attaches at the sidewalls. Customize the tip if necessary, by filing it.

PRO TIPS

- If it's been longer than 10-minutes since you prepped the nail, reapply pH-nail prep (not primer) before you start.



PRO TIPS

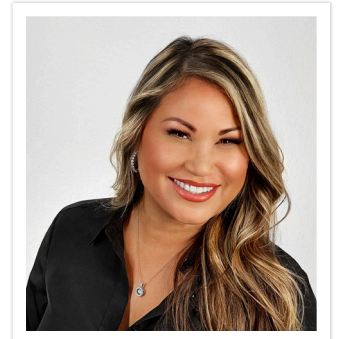
- Try to use the same sized tips from hand to hand. Therefore, if you have a number 4 on the pointer (index) finger, you should try to make the other index finger the same size. Customize the tip if you need to in order for it to fit perfectly.

2

Apply the plastic nail tip with resin. Make sure you use very little resin inside the well of the tip and then gently, yet firmly, rock it onto the natural nail. Slide the tip up to the free edge so that it meets the position and then stop. Next, firmly press the tip down to the nail to push out any air bubbles in the resin. Hold in place until the resin is set.

PRO TIPS

- To customize a tip use a 180-grit file to shorten the sides or to shape the corners, so that it fits correctly. Repeat on the opposite side, so your tip stays centered and balanced.



Alisha Rimando
GLOSSARY LIVE

USA

alisharimando.com

IG: @alisharimando

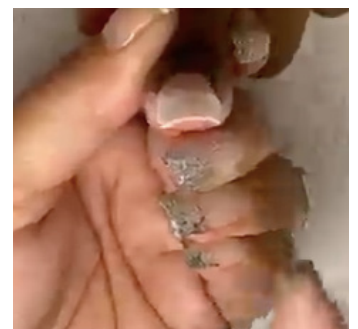


PRO TIPS

- If you get a small bead of resin seeping out from under the well of the tip onto the natural nail, take an orangewood stick or pusher and even out the bead of resin along the line of the tip so it dries evenly. A small bead of resin at the contact point works as a good protector for the natural nail when ready to blend the tip.

3 Check that the contact point of the tip on the natural nail is tight and check both sides to see that it is a perfect fit and has been adhered correctly to the nail.

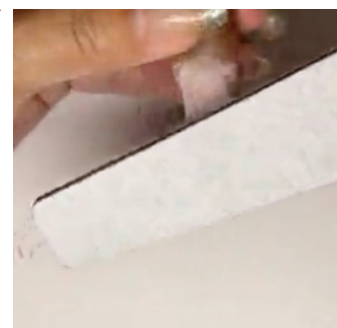
4 Shorten the tip with tip cutters to the desired length. Then make sure you measure - hand to hand and finger to finger - to ensure the lengths are consistent. A good rule of thumb is that the pointer (index), middle and ring fingers are all the same length from cuticle to extension edge.



5 Use a 150-grit file to shorten the tip and shape prior to starting to blend it.

6 File the sidewalls and the side groove to complete the shape of the extension edge.

7 File the tip thin, so when it has its overlay, you won't see layers of tip, product and any other product such as gel. Create a thin tip with a lightly etched surface ready for product application.



8 View the nail from the side and look for the highest point. Begin filing flat to reduce the mass of the tip and rotate the client's finger at the same time, so you file in the roundness of the natural nail.

PRO TIPS

- Leave the nail file on the surface of the tip while you file it. It will double your speed by being in constant contact with it. However, keep checking the nail as you file and smooth it to ensure a seamless blend between natural nail and tip. Live by the rule, that if you can see it now, you'll see it later. Stopping to check your work also eliminates any heat created by friction while filing.

9 Now buff and blend the nail tip using a softer sponge file. Lightly etch the surface of the natural nail so the overlay product will adhere easily to it.



10 Using a sanitized nylon manicure brush, remove any dust from the nail and tip. The bristles are firm enough to remove stubborn dust and debris in the lateral folds.



11 Evaluate the blending by viewing the nail and tip extension from all angles, you can now apply primer to the natural nail plate, as you are ready to proceed with the overlay.



PRO TIPS

- Balance & length of nail extension can be determined mathematically by using the cuticle pusher to measure. Place the cuticle pusher on the nail to see how long the natural nail bed is. Then use that same length for the extension, measuring from the hyponychium out. This is a ratio of 1:1 and should be the longest length a client wears to ensure balance of the extension so that it does not break. If the client is not used to wearing nails then make the extension edge 1/2 the length of the nail bed or shorter according to their preference.



The final result

In this step by step guide you learned how to customize a nail tip to give your client the right fit while avoiding those dreaded side glitches. You learned to shape and blend nail tips without damaging the natural nail and how to create a perfectly thin foundation for your overlay services. It takes a ton of practice on different shapes and sizes of nails and fingers to master tip application. However, if you take the time to create that perfect fit, you will be well on your way to speeding up your application time in the salon as well as avoiding all those glitchy problems you have experienced in the past. Join me for the next instalment, as I show you my tips and tricks on how to customize a French tip to create a competition French look.