

BACK to basics

SCULPTING A SQUARE AND SQUOVAL NAIL



This workbook will teach you how to sculpt a square and a squoval nail shape in the salon. You will learn proper form placement for each shape, focus on creating and applying the liquid and powder beads, alongside learning special filing techniques for each shape.

WHAT YOU NEED

Dappen dish, lint-free wipes, monomer, pink powder, brush, 150/180-grit file.

GETTING PREPARED

Fill the dappen dish with monomer. Make sure the liquid is deep enough to submerge the entire bristles of the brush. Place a lint-free wipe beside the dappen dish so you can clean your brush before you start. Place your chosen color powder beside the dappen dish.

Alisha Rimando



Alisha Rimando is recognized as one of the nail industry's leading experts in training and education. In her 28 years experience, her work has been described as "ground-breaking" as she has been a platform artist and motivational speaker for thousands of promotional and educational events, and competed in hundreds of nail competitions around the globe winning the *World Nail Championship* in 2005 in *Pink and White Sculptured Nails*. She is the featured artist in many training videos, including hosting the current *Milady Standard Nail Technology* DVD Series.

Alisha's expertise and application techniques have been featured in more than 150 beauty and trade publications and blog spots world wide such as *Teen Vogue*, *Bridal Guide*, *Self*, *Fitness*, and *Seventeen* magazines, as well as numerous industry trade magazines like *Nails*, *Nailpro*, *Scratch (UK)* and *Stylish Nail (Japan)*. Her career took an additional leap in 2008 when she became a published author for Cengage Learning, contributing to *Milady Nail Technology* and *Standard Cosmetology* textbooks, a consistent honor she engages with each new edition.

Through the years, Alisha has worked with R&D chemists to develop nail enhancement products, nano technology skincare, cuticle treatments, polish collections and natural nail treatments. Alisha's artistic creations have been sought after for numerous ads and campaigns as well as garnered celebrity status being featured with Jennifer Hudson in her video "Spotlight" and leading teams at NYC Fashion Weeks.

Her passion for educating the nail community takes her on another adventure with the conception and development of GlossaryLive.com



Alisha Rimando GLOSSARY LIVE

USA

alisharimando.com

IG: @alisharimando



PREPARING YOUR BRUSH

To prepare the brush, dip the bristles in the liquid monomer. Wipe the brush on the side of the dappen dish and then wipe the brush in one direction only, on the lint-free wipe.



Prep the nail as shown in detail in *Back to Basics* Season 1.



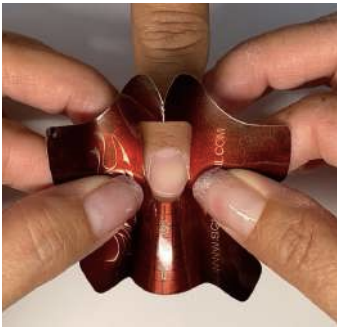
1 After you have prepped the nail ready for application of L&P, pick up your first bead. Put the brush into the monomer liquid. Half wipe it on the side of the dappen dish, then turn the brush and place it in the powder. Pick up your bead and wait until it gets creamy.



Make sure you use the same technique to pick up every bead. Consistency in every bead is what you require.

PRO TIPS

- For the thumb nail, pick up a larger bead. Let it go creamy, and then apply it to the nail.
- For the pinkie finger, pick up a smaller bead, as it's a much smaller application.



2 Apply a form to the prepped nail. Make sure you place it at the free edge and secure it along the sides (lateral nail folds), then squeeze and pinch the tabs together underneath to get a snug fit.



3 Check your form down both sides to make sure it is straight and secure. The form must be straight and equal in order to create a square nail.



4 Check underneath to see the hole in the form. This hole must be open. This is what decides the width of the nail. Squeeze the hole together if it is too wide, however, if the hole is too tight, open it up using an orangewood stick or the end of your brush. The form must be straight at all times.



5 Check the front of the form. Use your thumbs to press the form in at the smile line to make sure it is fitted correctly.



6 Turn the form to the side, check the tabs are together and closed correctly. Pinch them in to confirm.



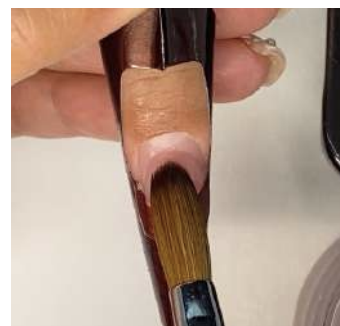
7 Use the lines on the form to guide you. Use the vertical lines to match to the line of the natural nail. Use this line to guide your sidewall. This will also help you work in straight lines.



8 Choose the horizontal line for the length of your nail. Here I have chosen the 2nd line down marked 'S'.



9 Pick up your bead. Wait until it's creamy and place on the separation line at the free edge. This is where the apex of the nail is. The apex is where you want the bulk of the product to be placed.



10 Tap the bead to seal it down to the nail plate. Press the product, moving from side to side. Stretch it over from one side to the other. Then gently pat & drag it down towards the 'S' on the form to get the length.



11 You want this nail to dry evenly on both sides, so make sure you work from side to side, do not focus on one area. Keep working the product on both sides as well as at the free edge.

PRO TIPS

- For differing natural nail shapes, you may need to tailor your form for an exact fit.

PRO TIPS

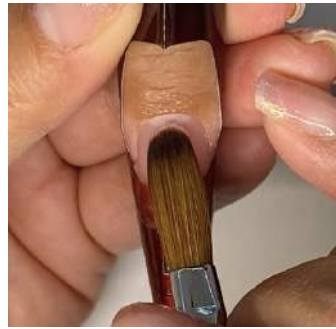
- The apex of the nail is also known as the stress area.
- With liquid & powder nail extensions you want as much playtime as possible, so work smartly, as this artificial nail system cures/sets as you work.
- We place the free edge bead first since it takes longer to set. The bead placed at the cuticle area and on the nail bed cures/sets quicker due to the client's body heat speeding up the set time.



12 Now create the entire surface of the nail. Place a second bead on the apex area, where you want the bulk of the product to be. Pat it thin towards the cuticle area and to the sides. Blend this second bead into the product that's already been applied. Keep the bulk of the product in the center.



13 Assess the nail to see if you need to add any further product. You want to see a nice, thin nail with the thickest point at the center, where the apex is.



14 You might decide you need to add product to give the nail more strength, if this is the case, pick up much smaller beads as you apply and blend in the product.



15 Wait for the product to dry and set before you take away the nail form. You can test if it's ready, by tapping with an orangewood stick or the handle of your brush. If you hear a thud, it is not ready yet. If you hear a clicking sound, then it's starting to set up.



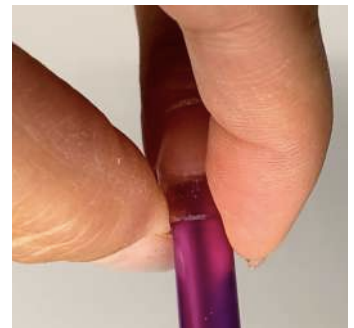
16 Use your thumbs to fold and roll down the nail as it dries. Keep your elbows out as you wrap and roll down the nail - making sure the product is setting in a straight and sharp line. As you roll down, you will feel the nail popping away from the nail form as it sets.



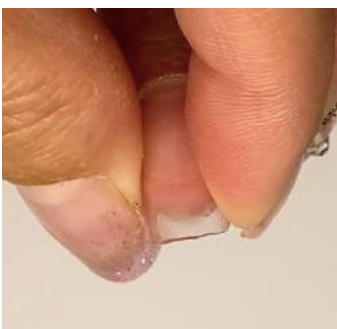
17 Carefully remove the nail form. A good form will be hard to pull off as it should be adhered well to the finger. Pull the form clearly and cleanly down and away from the hyponychium.



18 The nail is now ready to be folded down the sides. Take your thumbs and press in at the widest part of the nail - at the smile line. Keep focused on the lines being straight and parallel to create a perfect square nail.



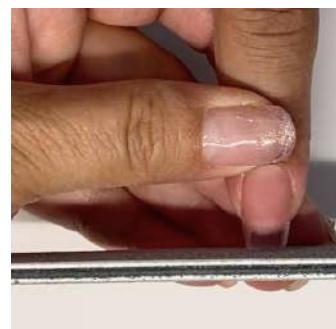
19 To create the perfect C-curve, take a C-curve stick and pop it into the end of the nail. Pinch either side of the nail tip to wrap it around the stick as it sets. This will make sure the half circle of the nail is even and structured.



20 Use your fingers to hold the tip as it sets to make sure the C-curve stays in place. The heat from your fingers will help finalize the cure.



21 Take a look at the nail from underneath to check the C-curve is correct and the sidewalls are parallel.



22 Now shape the free edge. For a square nail, you need to hold the 150/180-grit nail file in a straight line against the free edge. Hold the file at a 90-degree angle to the nail. Then file back and forth to create a hard, square nail.



23 Move the file to the sidewalls. Hold the file straight and file straight down, do not taper. Keep your elbows tucked in for this step. Make sure you stay filing in a straight line down from the natural nail line.



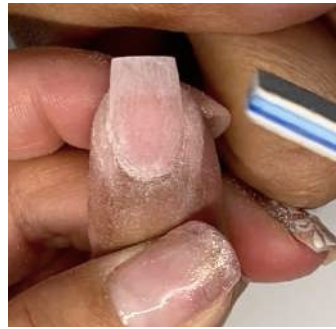
24 Turn the nail to the side and pull back the skin to file down the side groove or lower arch. Keep the file in a straight line and parallel with the finger.



25 File the surface of the nail to take away any excess bulk product at the apex. Create the shape, structure and form of the nail.

PRO TIPS

- Use a 150/180-grit to file & shape the nail extension & sharpen up the sidewalls and free edge.



26 Turn the nail around and look at it from the client's perspective. Here you can check that you have a crisp, square nail with sharp corners.



27 Polish with desired shade. Final square nail.

NOW WE CREATE SQUOVAL



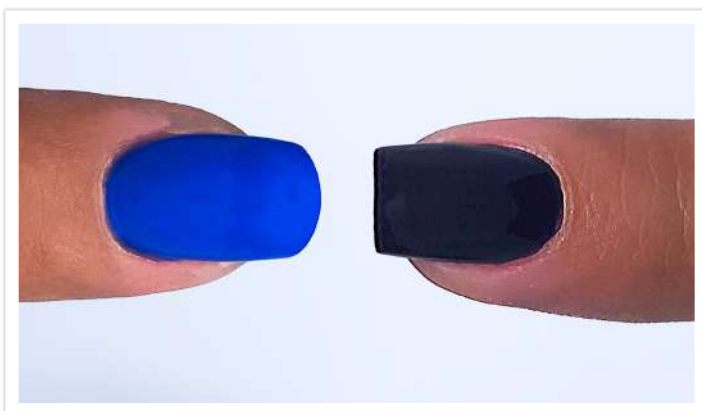
28 To soften this look you can create a soft square or squoval by filing the free edge at a 45-degree angle instead of a 90-degree angle.



29 Once the edge is squoval, to soften the look even more, take off the hard edge by slightly rounding the corners.



30 Polish with desired shade. Final squoval nail.



In this workbook you have been shown how to sculpt a square nail in the liquid & powder artificial nail system. Sculpting steps from building the apex, creating parallel sides and pinching in the C-curve are depicted in stages. Then after sculpting is complete, the nail form is removed and skillful filing is used to refine the shape of the nail. This is followed with direction on how to turn the square into a soft square or squoval nail.