

BACK to basics

SCULPTING AN ALMOND OR POINT NAIL



In this workbook you will learn how to sculpt an almond or point nail. You will learn proper form placement, attention to creating beads and placing the liquid & powder, as well as special filing techniques to create perfectly sculpted nails.

WHAT YOU NEED

Dappen dish, lint-free wipes, monomer, pink powder, brush, 150/180-grit file.

GETTING PREPARED

Fill the dappen dish with monomer. Make sure the liquid is deep enough to submerge the entire bristles of the brush. Place a lint-free wipe beside the dappen dish so you can clean your brush before you start. Place your chosen color powder beside the dappen dish.

Alisha Rimando

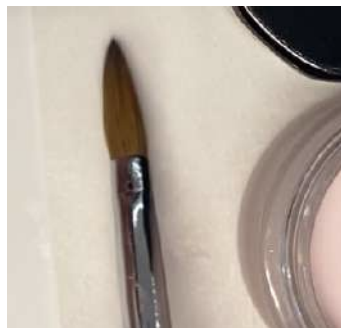


Alisha Rimando is recognized as one of the nail industry's leading experts in training and education. In her 28 years experience, her work has been described as "ground-breaking" as she has been a platform artist and motivational speaker for thousands of promotional and educational events, and competed in hundreds of nail competitions around the globe winning the *World Nail Championship* in 2005 in *Pink and White Sculptured Nails*. She is the featured artist in many training videos, including hosting the current *Milady Standard Nail Technology* DVD Series.

Alisha's expertise and application techniques have been featured in more than 150 beauty and trade publications and blog spots world wide such as *Teen Vogue*, *Bridal Guide*, *Self*, *Fitness*, and *Seventeen* magazines, as well as numerous industry trade magazines like *Nails*, *Nailpro*, *Scratch (UK)* and *Stylish Nail (Japan)*. Her career took an additional leap in 2008 when she became a published author for Cengage Learning, contributing to *Milady Nail Technology* and *Standard Cosmetology* textbooks, a consistent honor she engages with each new edition.

Through the years, Alisha has worked with R&D chemists to develop nail enhancement products, nano technology skincare, cuticle treatments, polish collections and natural nail treatments. Alisha's artistic creations have been sought after for numerous ads and campaigns as well as garnered celebrity status being featured with Jennifer Hudson in her video "Spotlight" and leading teams at NYC Fashion Weeks.

Her passion for educating the nail community takes her on another adventure with the conception and development of GlossaryLive.com



PREPARING YOUR BRUSH

To prepare the brush, dip the bristles in the liquid monomer. Wipe the brush on the side of the dappen dish and then wipe the brush in one direction only, on the lint-free wipe.



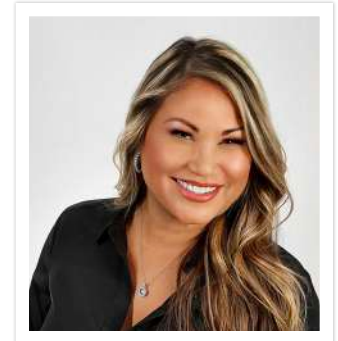
1 Prep the nail as shown in detail in *Back to Basics* Season 1.



2 Take the form, pull off its sticker and place it on the back to make it sturdier. Roll the form between your fingers to make it easier to apply to the finger.



3 For an almond nail place the form on the nail and squeeze it together tightly so it is completely closed. This will create an almost stiletto style nail, except the nail will be sculpted straight out from the natural nail and we want the product to roll down the sides to create strong sidewalls and longevity of wear.



Alisha Rimando GLOSSARY LIVE

USA
alisharimando.com
IG: @alisharimando



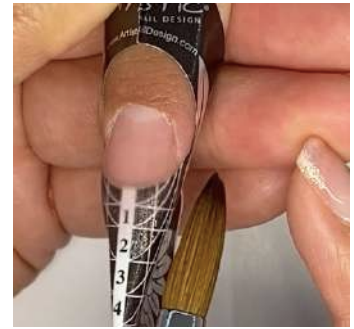
4 Keep the form straight and taper it right down.



5 Put the brush into the monomer liquid. Half wipe it on the side of the dappen dish, then turn the brush and place it in the powder. Pick up your bead and wait until it gets creamy. Place the bead in the center of the nail where you want your apex to be at the point of the pink & white separation line.



6 Keep the bulk of the product in the center of the nail. Use the backside of the brush, right by the ferrule and push the product down and follow the lines on the form. Move the product over to the side to extend the sidewalls and stretch the product down. Use a form that has good oval lines to follow as you sculpt.



7 Work the product carefully; pat, blend and shape as you sculpt to the desired length. Be sure to follow the oval lines on the form.



8 Now put the brush in the monomer, as you pull it out, press a little harder to release more monomer from the bristles. With a less wet brush, take a smaller bead, which will have a drier consistency. Place this bead at the tip and blend it up the nail. A drier bead means the product will dry/set with the rest of the nail.



9 Turn the nail to the side. You want to see thin product application to the side and at the tip. The bulk of the product should be in the center, at the apex.



10 To thicken the extension, pick up a new bead and place it in the center of the nail. Tap it carefully up towards the cuticle and then blend the line out between the apex and the tip.



11 Tap and pull the product from the apex to the cuticle patting it into place.





12 Place the brush parallel to the nail and pull the product forward.



13 You want to see a soft shaped nail, a beautiful graduation of product from the cuticle to the apex and then it should taper down from the apex to the free edge.



14 Now let the product set a little before pinching in the C-curve. Tap the product with a C-curve stick to hear if it's setting.



15 Start to pinch the nail with your thumbs. Then roll down the sidewalls with your fingers. Keep your elbows out and roll down the nail from the widest point down and hold into place.



16 You can hold with your thumb and forefinger as it sets. Pinch it very tightly at the free edge to get the tight tapered nail shape to form.

PRO TIPS

- Rolling the product down with your fingers should not hurt your client as the product is malleable while it's setting.



17 The nail form should pop away from the nail and peel away easily.



18 Take the smallest C-curve stick and place it in the very end of the nail; squeeze as tightly as you can to give the pointed end a deeper curve. This adds strength to the tip, looks beautiful and gives the almond nail a little bit of character too.





19 Assess the nail from above and the sides to see that it is wide at the smile line with a beautifully tapered tip. From the side check that you have equal and obvious sidewalls to give strength to the nail, that the apex is a perfect graduation and check the C-curve down the barrel of the nail.

20 Take a 150-grit file and start filing the sidewalls. Keep the file straight and file directly down from the cuticle area.



21 Angle your file to accentuate the almond nail shape and create the pointed nail tip.

22 File the side grooves and take away the edge by filing straight out from the cuticle area.



23 Now move to the surface of the nail with your 150-grit file to refine the shape and bulk of the nail.

24 Change file to a 180-grit and repeat all previous filing steps. You need to refine until the product is thin at the cuticle area, the tip and the sides. The thickest area must be at the apex of the nail.

NOTE

- The almond nail is super elegant with an edgy trendiness to it.



25 Take your buffer and buff the entire nail in the shape you have now created. Buff straight on the sides and taper in at the tip. This is when you determine just how sharp you want the point of the nail to be.

**PRO
TIPS**

- As you move into the buffing stage you can visibly see the nail becoming smoother.



26 After buffing, you have a strong, defined, smooth and elegant nail; the closest you can get to a stiletto on a short nail.



27 Clean the nail of all dust and debris before the application of color.



28 Apply 2 coats of desired color to finish the nail.



In this workbook you have learned how to correctly fit a nail form in order to sculpt a point or almond nail. The steps have guided you through picking up and applying the L&P bead, to sculpting the nail on a form. You have learned to taper the sidewalls by pinching in the C-curve. You now know how to refine the nail shape and surface by filing and buffing then completing the look with two coats of nail color.