

# MASTER class

## APPLICATION OF RED POLISHED NAILS AND FINISH FILING



Emese  
Koppányi



A nail professional for over 22 years, Emese specializes in sculptured pink & white acrylic nails, which she's competed in since 1999.

Trained by some of the biggest and best competitors the nail world has seen, including Tom Holcomb, Alisha Rimando, Tom Bachik, and Trang Nguyen, Emese has accumulated over 120 trophies to her name. An elite educator, Emese offers group and one-on-one trainings, with many of her students taking championship titles after her classes. "I've presented classes across Europe and Asia, (Malaysia, UK, Italy, France, Belgium, the Netherlands, Slovakia, Spain) as well as in the USA and Brazil and much more," enthuses Emese. "I've also worked with many different nail brands (Cesar's Secret, Odyssey Nail System, Trinity Nails, Pearl Nails), so I've a wide berth of industry knowledge to impart."

### WHAT YOU NEED

Natural nail tips, pink powder, white powder, monomer, nail adhesive, nail dehydrator, non-acid-primer, manicure brush, application brush, nail oil, pinch sticks, electric file, dappen dish, lint-free wipes, nail files 100/180-grit, 240/280-grit buffer, 320/3000-grit shiner.

## PREPARING THE NAIL

Use this technique for your red polish application when the rules call for a white free edge under the red color.



**1** Prepare the nail for application of the pink & white acrylic. Customize & apply the nail form for a snug & perfect fit to the fingernail. This is shown in detail in workbook 1.



**2** Apply dehydrator & non-acid primer to the nail plate ready for application. Next measure the nail to assess the length of both the pink nail plate & the white free edge. As shown in detail in workbook 1. Emese has chosen to sculpt the nail between the 5 & 6 lines on the nail form for this demonstration.

## PRO TIPS

- Emese never uses the ratio 1:1 on a competition nail due to the depth of the smile line. The white free edge will be just shorter than the nail bed to give balance to the nail.

This method is deceiving as the nail will look like it was sculpted using the 1:1 ratio when finished.



**3** Pick up a medium-sized bead of white, exactly the same as when sculpting the other P&W nails. However, the difference when sculpting this nail, is that there will be NO crisp smile line. Make sure to sculpt the sidewalls & corners exactly as the other nails.

Moving to the USA in 2016, Emese opened a nail salon on Sunset Strip in LA together with nail expert, Frederic Edange. A year later they founded the nail product brand, EDKO Nail Systems with all products and tools designed and tested by them. Published in magazines worldwide, Emese has also had covers on three editions of the USA's *Nailpro* magazine. Invited to judge at the prestigious *Nailympia* competitions in London and Houston, Emese's expertise is undisputed with her biggest competition achievements including 2010 *World Champion* in Monaco, *Nailpro Cup USA 2018*, four times *European Champion* in Munich and 10 times *Hungarian Champion* Tom Holcomb Cup winner.



Emese Koppányi

Hungary & USA

IG: @emesekoppanyi

## PRO TIPS

- This nail does not require a crisp smile line because when it is painted red you would see the smile line through the polish. This nail requires an ombre style P&W.



- 4** Do not spend time perfecting the smile line. Instead, make it flat so the pink can go over the top to shadow the white line.



- 5** Place your medium-sized pink bead in the center of the nail where the white meets the nail plate. Pat the pink in place then, using long strokes, pull it down over the white tip.



- 6** Add a second bead of pink slightly further behind the first bead; pat it down and side to side and, using long strokes, pull it down the nail. Add another smaller bead to build the structure of the nail.



## PRO TIPS

- Because the red nails are created much faster they will take a little longer to cure, therefore you must be careful not to pinch too soon.

## PINCHING THE NAIL



- 7** Use your thumbs to roll down the sidewalls of the nail & use pressure to pinch in the C-curve while the product is curing. The wetter the product, the longer it takes to cure, therefore giving longer to pinch & mold the nail into shape. Use your thumb & index finger to add a little extra pressure to the pinch.



- 8** Tap the sculpted nail with your fingernail or brush to hear if it has cured enough to pull away the nail form. If it gives a hollow sound, gently pull away the nail form.



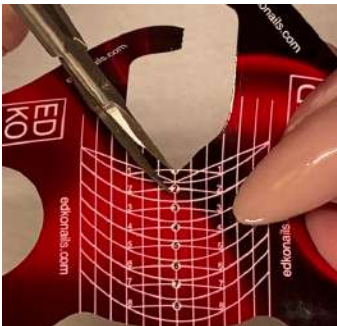
**9** Continue to pinch in the C-curve when the form has been taken away as the product is not fully cured & is likely to bow back out if you do not hold it in place.



**10** Take a C-curve stick & place it into the end of the nail, then wrap the edge of the nail around it to get the perfect C-curve. Graduate to a smaller stick if you want to get a smaller C-curve.

## SCULPTING THE THUMB IN CLEAR PINK

Use this technique for your red polish application when the rules do not specify the color under the red. Using just one color such as clear or sheer pink will save time.



**11** Prepare the thumb nail for the P&W application. Customize & fit the nail form. Because the nail is wider, the form customization is very different to the previous nail & requires a more oval shape.



**12** Use a pinch stick in the end of the nail form to get the correct size & shaped opening (in this case slightly rounded), as this directly affects the shape of the nail being sculpted.



**13** In readiness for the P&W application, apply nail dehydrator & non-acid primer to the natural nail.



**14** Measure the nail, as before, to assess what length the nail should be.





### PRO TIPS

- To sculpt the whole nail in pink can make it difficult to see exactly what you're doing, as the nail appears clear on the nail form & a dark nail form can be distracting to the eye.

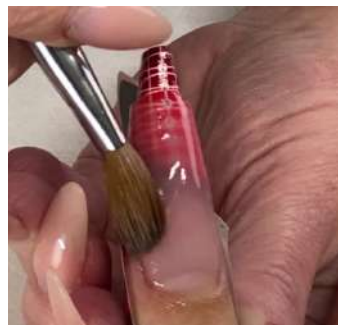
**15** Pick up a large-sized bead of pink & place it on the lint-free wipe to dry it out a little before placing on the nail form to create the extension edge.



**16** Press & pat the bead to the sides & down the form to create the shape & length of the nail. Add a little monomer to the brush to work slightly wetter as you sculpt.

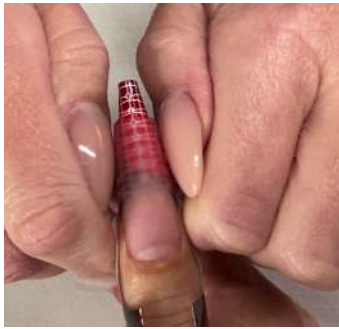


**17** Take a second large-sized bead of pink & place it slightly further back from the last bead on the natural nail. Pat & press it from side to side to create the apex & then use long strokes to take the product down the whole length of the nail. Wet the brush slightly to aid in moving the product into place.



**18** Take a third, much smaller bead of pink & add it into zone 3 of the nail near the eponychium. Keep a very close eye on the thickness of the nail, the sidewalls & watch for bubbles. Add small beads of pink wherever you need to build the nail to replicate the other nails in thickness, shape, form & structure.

## PINCHING THE CLEAR NAIL



**19** Gently press the nail to see if it's ready for form removal. When it's ready, the product will naturally separate from the form on its own.



**20** Use your thumbs to roll down the nail & pinch in the C-curve. Use your index finger & thumb to pinch in the stress point of the nail.



**21** Take a large C-curve stick & use it to wrap the nail around in order to get a strong C-curve. Then pinch using your thumbs to roll down the sidewalls of the nail. Hold at the stress point with your thumb & index finger.



## FILING COMPETITION NAILS



**22** Start by shaping the edge of the nail. Hold the file straight as you file. Then take the 150-grit side & file the sidewalls in a straight line. Move to the other sidewall using your fingers to support the other side as you file.



**23** Turn the hand slightly to get a better look at the sidewall as you refine it. Push the file into the side groove to place it correctly, to get the lower arch perfectly filed straight from the finger. Change the file to a 180-grit as you start to refine its shape.



### PRO TIPS

- For the cuticle area, Emese recommends using the curved part of the nail file.



**24** Change back to the 150-grit to file the surface of the nail. Move to the 180-grit as you refine the shape.



**25** Frequently stop filing to look at the nail from every angle to check its shape & structure is uniform on all sides.



### PRO TIPS

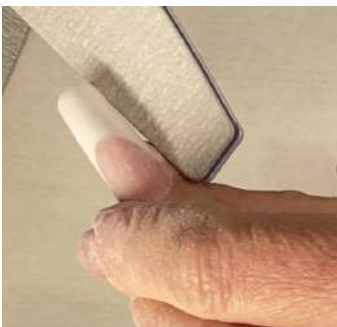
- Do not file too fast or too strong, as it's easy to file away too much product. Stay mindful that you want to gently refine the shape of the nail. It's too late at this stage to correct your mistake by adding more product.



**26** Once the top structure is filed, go back to straighten your sidewalls again. So the nails are perfectly straight from the top view.



**27** The product should be thin at the cuticle area (zone 3) & get thicker as it moves up into the apex of the nail & then it goes out into a straight line to zone 1.



**28** Again, keep checking that the sidewalls and side grooves are perfectly straight.

## PRO TIPS

- At this stage of the filing process, Emese does not recommend using an e-file, (most competitions won't allow e-files in this category), as she feels you can refine the surface and shape the nail better with a hand file.



**29** View the nail from the client's perspective to assess the apex & its concave structure from above. Check there are no angles on the nail's surface & take a 240-grit file & file from this angle so you can see its shape clearly.



**30** Turn the hand around & continue shaping the nail. Keep checking the nails from all angles in between filing.



**31** Clean the nails periodically with a manicure brush in order to see the surface smoothness & shape.

## PRO TIPS

- Stop buffing the nails that will be polished red after you have refined the surface with your 240 or 280-grit buffer. If the nail is too shiny, the nail polish will bleed.



**32** The clear French nails are now ready to be buffed to a high shine. Start with the 100/180-grit buffer. Take the 100-grit side & buff the surface of the nail with exactly the same motions that you filed with previously. This will ensure that all scratches have been removed and smoothed & the nail has the exact same shine over the entire surface.





**33** When ready, change to the 180-grit side of the buffer & repeat all the movements. Periodically, use a manicure brush to clean away filing debris from the nail, so you can reveal each stage of the shine.



**34** Change to the 200/280-grit buffer. Start with the 200-grit side, moving onto the 280-grit when you have covered all the movements as before. Support the whole nail with your thumb & fingers, to avoid breaking the corners.

## PRO TIPS

- When buffing nails in a competition, Emese uses a fresh buffer for every other nail. Therefore using 5 sets of buffers for 2 hands.



**35** Take the 280-grit buffer & use very slow movements to buff the nail.



**36** Now take the 3-way shiner & buff using its 320-grit. Work the shiner slowly with pressure. Next change over to the 400-grit side of the shiner. Then change over to the 3000-grit side. As the shiner works its magic, you can hear the nail squeaking under the pressure.



## PRO TIPS

- Some nail competitions allow the use of cuticle oil, some do not. Read the rules carefully; if it's possible to use nail oil, then add a tiny amount to the cuticle area and massage it in. Judges will deduct points for leaving the nails and skin saturated with cuticle oil.



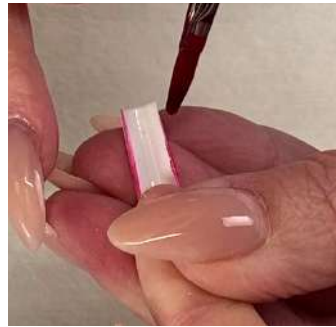
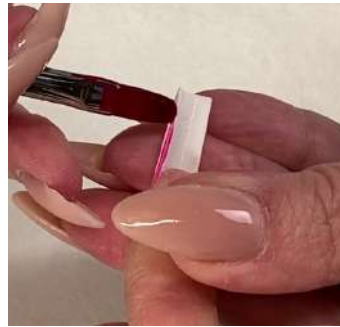
**37** Use the abrasive end of a pinch stick to make sure the C-curve of the nail is also buffed & it's the same thickness throughout its entire curvature. This also helps get the end of the nail wafer thin.



**38** Clean away all filing debris from the nail & add a small dot of nail oil. Rub it into & along the nail using your fingers.



## POLISHING THE NAIL RED



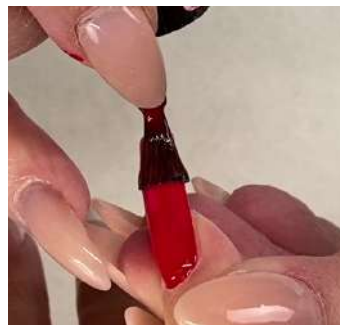
### PRO TIPS

- For competition, Emese uses a fresh new shiner for every nail.
- Be careful to not get red polish on the underside of the nail. Points will be deducted if the judges see polish under the nail.

**39** Turn the hand over & look at the underside of the nail. Take a brush & start by polishing the sidelines of the nail first. This Prevents you from touching the wet red polish later.



**40** Pull back the skin at the cuticle area, then apply the polish. Using an art brush allows you to get in very close without touching the skin. Paint the hairline of the C-curve too.



**41** Move to the second nail & paint it red, to give the first nail time to dry before its second coat.

**42** For the second coat use the brush from the polish bottle. The red polish must be the very last thing you do on the set of nails, if you file, the dust will go straight to the red nail & all your hard work is erased. Complete the nail by giving the hairline a second coat.

### PRO TIPS

- Always leave enough time to apply the red polish towards the end of the competition. Valuable points can be gained or lost from this important element.
- After you have completed the 2 red fingers you must not touch any of the fingers on the hand.
- Clean off any red marks that have spots the skin using a small corrector brush in acetone.





In this workbook you have learned two ways of sculpting the nails that are polished red in a P&W French sculpture competition. You have been shown how to file & shape all of the nails, as well as the process that takes it to a high glass-like shine. Application of red polish has then been demonstrated to complete the competition nail look.