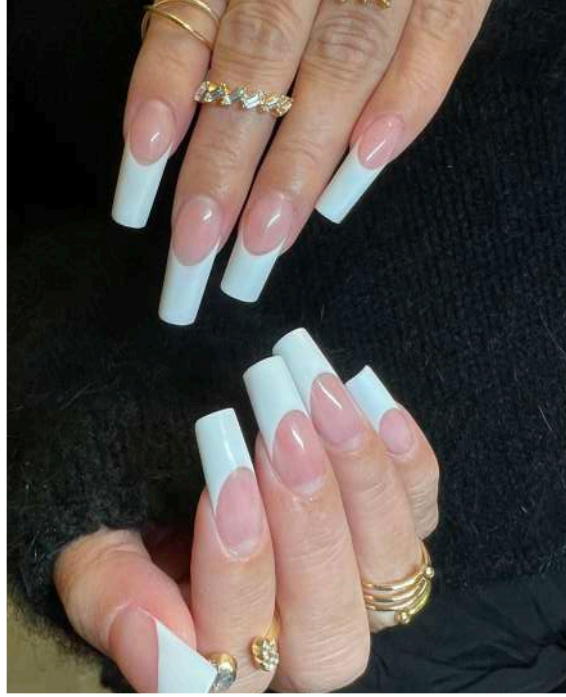


# MASTER class

## COMPETITION ACRYLIC TIP & OVERLAY



## Emese Koppányi



A nail professional for over 22 years, Emese specializes in sculptured pink & white acrylic nails, which she's competed in since 1999.

Trained by some of the biggest and best competitors the nail world has seen, including Tom Holcomb, Alisha Rimando, Tom Bachik, and Trang Nguyen, Emese has accumulated over 120 trophies to her name. An elite educator, Emese offers group and one-on-one trainings, with many of her students taking championship titles after her classes. "I've presented classes across Europe and Asia, (Malaysia, UK, Italy, France, Belgium, the Netherlands, Slovakia, Spain) as well as in the USA and Brazil and much more," enthuses Emese. "I've also worked with many different nail brands (Cesar's Secret, Odyssey Nail System, Trinity Nails, Pearl Nails), so I've a wide berth of industry knowledge to impart."

Moving to the USA in 2016, Emese opened a nail salon on Sunset Strip in LA together with nail expert, Frederic Edange. A year later they founded the nail product brand, EDKO Nail Systems with all products and tools designed and tested by them. Published in magazines worldwide, Emese has also had covers on three editions of the USA's *Nailpro* magazine. Invited to judge at the prestigious *Nailympia* competitions in London and Houston, Emese's expertise is undisputed with her biggest competition achievements including 2010 *World Champion* in Monaco, *Nailpro Cup USA 2018*, four times *European Champion* in Munich and 10 times *Hungarian Champion Tom Holcomb Cup* winner.

### WHAT YOU NEED

Natural nail tips, pink powder, white powder, monomer, nail adhesive, nail dehydrator, non-acid-primer, manicure brush, nail oil, pinch sticks, electric file, dappen dish, lint-free wipes, nail files 100/180-grit, 240/280-grit buffer, 320/3000-grit shiner.

### SIZING THE TIP



**1** Prepare the natural nail ready for tip sizing & application.



**2** It's important to get the correct sized tip onto the nail. It must fit from side to side, not bigger or smaller, but be an exact fit.



**3** This tip will need customizing (filing to fit) as there is too much plastic tip at the stress area. Too much plastic means, as the monomer is absorbed into the plastic tip, it's impossible to sculpt a perfect smile line. Therefore it needs to be customized to a 1mm overlap.



### PRO TIPS

- A plastic tip will absorb the monomer as you apply the white.
- Competition nail tips are created with the same thickness along the whole tip.



**Emese Koppányi**

Hungary & USA

IG: @emesekoppányi



**4** Use an e-file to customize the nail tip. This allows for creating a deeper smile line & thinning out the tip at the point where it will be adhered to the natural nail.



**5** Keep placing it on the nail to gauge when it is ready to be adhered.

**6** After the tip has been shaped & thinned by the e-file, clean away debris using a manicure brush, then tidy up its edges & smooth it over with a buffer.

**7** The nail tip is very thin, matte, has a smile line, a C-curve & is now ready to adhere.

## PRO TIPS

- Emese uses natural tips, as you cannot see as clearly if the tip has been over-filed, as you can on a clear tip.

## TIP APPLICATION



**8** Apply nail prep to the natural nail. (Do not apply non-acid primer at this stage).

**9** Brush a small amount of nail adhesive into the end of the tip where it will be attached to the natural nail. Then place the tip at the very end of the nail plate going in at a 45-degree angle, then press upwards & place the tip flush with the nail. Hold it there for a few seconds up to a minute, to allow the resin to harden.



**10** When it is dry enough to pull away, push in the wings of the nail tip at the side groove with your thumb & index finger. Then wipe away excess nail adhesive that has seeped out from under the tip using a lint-free wipe.



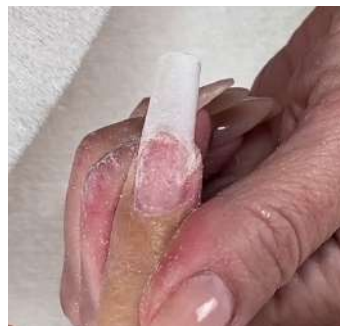
**11** Take a ruler & measure from the cuticle to the deepest point of the smile line. This measures here at 15mm. The white tip measures 19mm, so the tip must be cut to get the correct length to look balanced.

**12** Cut the nail tip. Now measure & check that it is also 15mm. This is perfect, as Emese does not work to a 1:1 ratio, she creates a slightly shorter white to give balance to the eye. This will naturally occur when she files the nail.

## PRO TIPS

- In a competition setting, Emese customizes & adheres all the tips before moving onto the next stage of overlay.
- Make sure there is no adhesive showing under the nail tip.

## BLENDING THE TIP



**13** File the nail tip to blend the tip with the natural nail so there is no line to be seen or felt between the two. The overlay product must be applied to a smooth surface.

**14** File the nail tip to get it as thin as if it were a sculptured nail.

## PRO TIPS

- Blending the nail tip is important, as the finish for acrylic tip & overlay must look the same as with a sculptured acrylic nail. The same C-curve, smile line & apex.



### PRO TIPS

- Since the nail tip will absorb the monomer as the overlay is being applied, a shiny surface will help seal the plastic, so less monomer is absorbed.



**15** Buff the nail where the smile line will be positioned & down the whole clear tip, as it eliminates the scratches. Start with a 180-grit & move to a 220/280-grit buffer & buff until it is almost shiny. Do not buff the pink of the nail. Clean debris from the nail with a dry manicure brush.

**16** Apply non-acid primer to the natural nail.

## PINK & WHITE



**17** Before picking up the bead, brush monomer over the nail tip only. The tip will absorb the liquid & leave it almost sticky. Do this a few times so the tip does not absorb the monomer during application too quickly.



**18** Pick up a medium-sized white bead. Work with a wetter brush while applying over the plastic nail tip. This means working with a very wet bead compared to sculpting. Work the product into place quickly, patting the product up the sides to create the deep smile & using long strokes down to stretch the product to the end of the free edge. Then move into the smile line and shape its deep curve.



**19** Observe the nail closely to see where extra product needs to be placed. Make sure each bead that is added to the nail is tiny and blended well.



**20** Push the brush behind the smile line to create a shadow line between the pink & the white.



**21** Pick up a smaller bead of pink & place it directly above the center of the smile line, then press & pat it from side to side to move the product into place.



**22** Place a second bead of pink just above the first. Some pink product may be brushed onto the white, this can be removed during filing.



**23** Place a third bead of pink in zone 3 near the eponychium. Pat & press this bead into place and use long strokes to brush it down the nail.



## FORMING THE C-CURVE

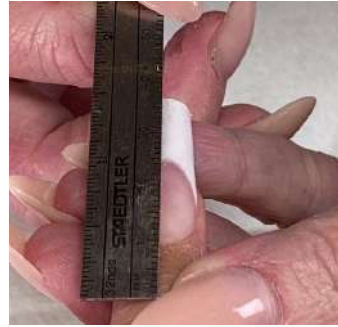


**24** Place a fourth bead in the center of the pink, where you want to build your apex.



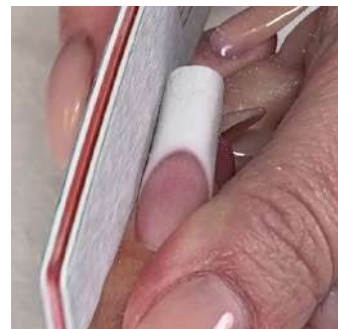
**25** When the product begins to dry, start to pinch with your index finger & thumb at the stress point of the nail extension. Then move the pinch down the nail tip.

FILING THE TIP & OVERLAY



**26** Since this is a plastic nail tip, pinching with finger & thumb is not enough to secure the C-curve as it can open as the overlay hardens. Take a C-curve stick & wrap the tip around it. Then continue to pinch with finger & thumb down the front of the white tip until the overlay hardens.

**27** Now measure the nail. Measure from the eponychium to the deepest section of the smile line. Then from the deepest part of the smile line to the free edge. Here, it is measuring 16mm for both.



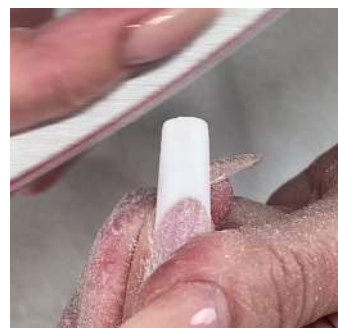
**PRO TIPS**

- Even though the nail is measuring 16mm for both pink & white, a ratio of 1:1, the nail in fact looks to the naked eye as if the white is much longer. So, to address this, so the nail looks balanced, file up to 1mm from the white.

**28** File the sidewall straight with a 150/180-grit file while supporting the nail with the other hand.

**PRO TIPS**

- Do not file too fast or too strong, as it's easy to file away too much product. Stay mindful that you want to gently refine the shape of the nail. It's too late at this stage to correct your mistakes by adding more product.



**29** Now file across the surface of the nail using a 150-grit file & as you move into the cuticle area, use the curved part of the file. Keep checking the nail to make sure you do not over-file any area by cleaning away filings with a manicure brush.



**30** Change to a 180-grit file & continue filing & refining the nail. Moving to higher grit files as you smooth and shape the nail will eliminate scratches on the nail when it comes to buffing to a glass-like high shine.



**31** Change to a 240-grit file. Repeat the filing cycle & then clean away the debris from the nail with a manicure brush.



**32** Take your 180-grit buffer & repeat exactly the same cycle of filing on the nail, so it is consistent & even. This also helps to further thin the nail.



**33** Take the 220/280-grit buffer & continue the cycle of buffing up the nail towards the goal of a high shine. Use pressure to aid in the removal of all scratches from the nail.



**34** Take the 400/3000-grit shiner & continue buffing. Slow down and press as you use the shiner buffer to ensure you are covering the surface well. Turn the shiner over to the 3000-grit side to begin shining.



Listen for the high pitched squeak as the nail becomes shiny.



**35** To complete the nail, take the abrasive end of a C-curve stick & use it to clean away any small filings left & to further thin out the tip. Smooth the nail from all angles & clear debris from underneath.





**36** If acetone is allowed, take a lint-free wipe & clean the underside of the nail with acetone. The acetone will slightly melt the tip & help remove any scratches.



**37** If oil is allowed, use nail oil to hydrate the surrounding skin for a healthy looking nail. Make sure excess oil is removed with a lint-free wipe, as too much oil will affect your points.



In this workbook you have learned the application technique used for competition style pink & white tip & overlay. You have been shown how to customize & adhere a tip, how to apply the acrylic product overlay, how to file, shape & buff the nail, as well as the process that takes it to a high glass-like shine.