

TAG THAT *trend* FALL PAISLEY



Yeon-jung Yoo



Yeon-jung Yoo is an Emi Korea master designer and the owner of the Fin & Toe Nail Salon.

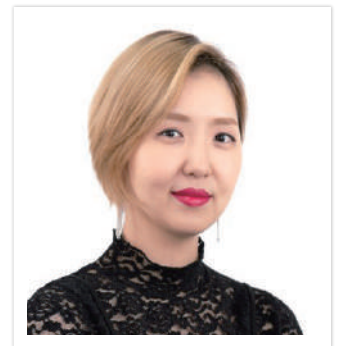
Yeon-jung graduated from Tokyo Mode in Japan then began work as a fashion designer. The nail industry was calling her and after she completed Emi School in Korea, she went on to study an art professor course at the Emi School in Russia. A master in nail design and education, Yeon-jung teaches nail students at the Emi School in South Korea.

WHAT YOU NEED

File, E.Mi Lac UV/LED Base Gel, E.Mi Lac Slider UV/LED Top Gel, E.Mi Velvet UV/LED Top Gel, E.Mi Empasta (Alpine Snow, White Rafinad), E.Mi Gel Paint (Milk Cacao, Black Tulip, Biscay, Potter's Clay), Gel Brush(Liner), Gel Cleaner, Pigma Pen, LED Lamp.

GETTING PREPARED

Prepare your table in a very organized manner eliminating cross contamination from the various products. Pay attention and make sure all necessary products are in hand's reach, so the colors are ready to use on the nail desk.



Yeon-jung Yoo
FIN & TOE NAIL SALON.

South Korea
IG: @emi_ryoor

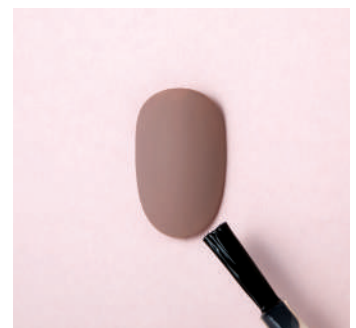
Credit: @nailholickorea
Photo: Kyunam Kim
Editor: Sarah Park



1 File and shape your chosen nail tip. Apply base UV/LED gel and cure.



2 Apply Emi Milk Cacao UV/LED gel polish and cure.



3 Apply non-wipe Velvet UV/LED top gel and cure.



4 Draw a paisley motif using a Pigma nail art pen.



5 Apply Slider UV/LED Top Gel and cure, then wipe off the sticky inhibition layer.



6 Draw a border around the nail tip using Biscay and Potter's Clay UV/LED colors and cure.



7 Draw a line inside the border using Black Tulip UV/LED color and cure.



8 Apply non-wipe Velvet UV/LED Top Gel and cure.



9 Place dots along the border using white UV/LED gel polish with a liner to complete the design, then cure.

