

# XXXTREME *nail art* TROPICAL MIXED MEDIA



## Diana Hernández

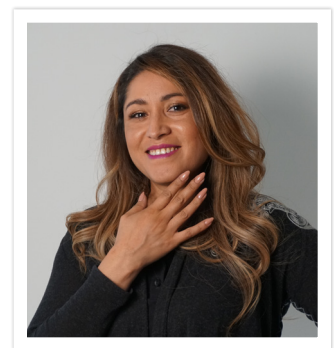


Master international  
educator & judge

An award-winning nail tech, Diana has been working as an international nail educator for over seven years. Keen to stay ahead of industry trends, Diana attends intensive training with international artists, in order to keep her education in line with global advances. Citing global masters such as Alisha Rimando, Ghenna González, Gisela González, Kateryna Gonchar, Fabiola Flores, Guin Deadman, Pisut Masanong, Marco Bonvicini & Krisztina Ujavri, among others, Diana's training has covered every sector of the nail industry giving her a wide berth of expertise to pass onto her students. In 2021, Diana added the title of 'doctorate' for Nailux Premium, to her list of accolades & achievements.

Collaborating with many brands, Diana has participated in global nail expos across the USA, Spain & Mexico while teaching in the USA, Belgium, Spain, Peru, El Salvador, Guatemala, Costa Rica, Puerto Rico & Mexico.

Diana favors working with L&P acrylic, UV gel & acrygel for competition nail styling, while her art is a blend of watercolors, acrylic paints, gel polish, gel painting, 3D in acrylic & plasticine.



Diana Hernández  
México

IG: @diana\_nailartister

**WHAT YOU NEED**  
Magenta, lemon, green, white, silver & black UV/LED gel paints. Fill liner brush. Blue, yellow, clear & white acrylic powder. Monomer & acrylic brush.

**GETTING PREPARED**  
Apply product to the top of nail tips as an overlay, or to the natural nails.

### CREATING THE BACKGROUND



**1** Apply your light base color with a small bead of L&P acrylic.



**2** Pick up a bead of blue & yellow acrylic, marble together & spread thinly onto the nail.



**3** Pick up a bead of blue & clear acrylic, marble together & spread thinly onto the nail.



**4** Continue with this marbling effect to cover the entire nail.

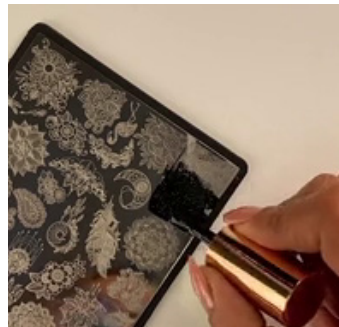


**5** Let the product dry, then file the surface & buff to a smooth finish.

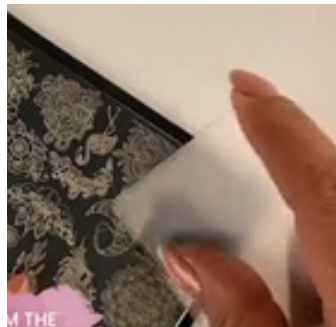
## MONOCHROMATIC COLOR PALETTE



**6** Using a fine sponge, smudge with black UV/LED gel paint, sponge the area of the nail where you will put your stamp to create a shadow effect. Cure nail & clean sponge.



**7** Apply fast drying black nail polish of your choice on the stamping plate at the corner of the design.



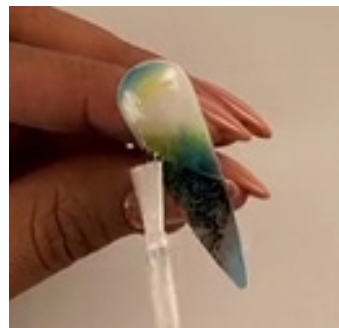
**8** Scrape excess polish from the plate with a thin plastic card.



**9** Roll a silicone stamping tool over the plate to transfer the design onto the stamping tool.



**10** Roll the stamping tool onto the nail to transfer the corner of the design, so that the border of the design is straight & creates a triangular effect.



**11** Apply UV/LED matte top coat & cure.

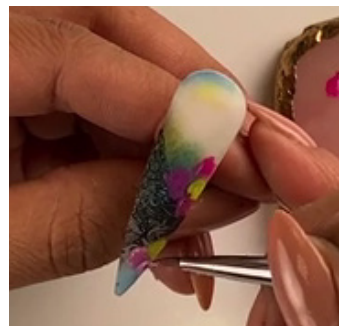
### PRO TIPS

- Remove any unwanted design that has transferred during the stamping using acetone or polish remover.

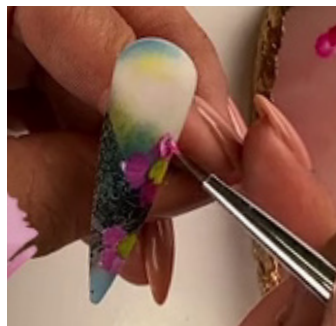
## HAND PAINTING THE DETAILS



**12** Use a fill liner brush to create the magenta petals & yellow center of the flower, then cure.



**13** Repeat step 11 to create more shadows & detail, while adding white to the magenta for highlights.



**14** Make leaves using green & yellow UV/LED paints, then cure the design.



**15** Add dimension by taking the magenta UV/LED gel paint & adding it around the center yellow section of the flowers. Cure when complete.

### PRO TIPS

- Double dip your fill liner brush into the magenta, then into the white UV/LED gel paint to create highlights & dimension across the flower petals.
- Always place your leaves between two petals

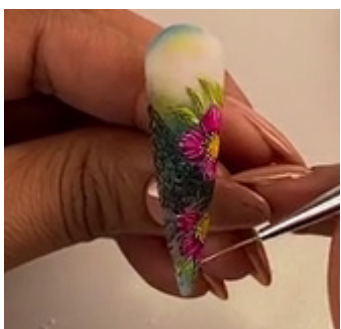


**16** Use a liner brush with black UV/LED gel paint to create the detailed lines in the flower petals & outline the leaves. Now cure.



**17** Use a liner brush with white gel paint to create the detailed lines in the flower petals & outline the leaves, then cure.

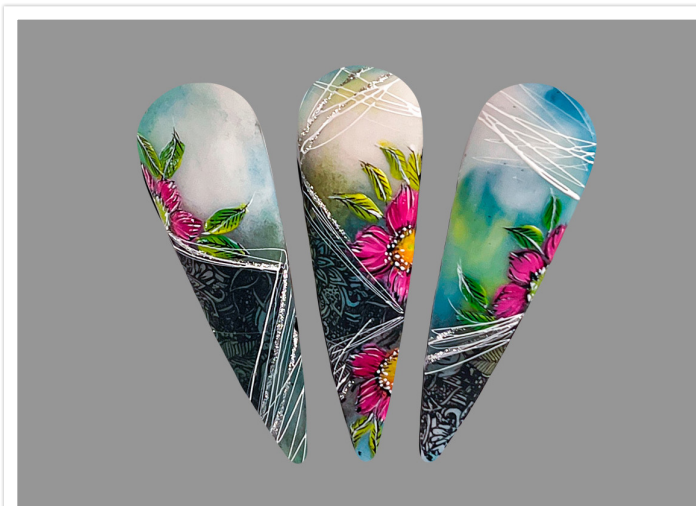
## FINAL DETAILS



**18** Take silver UV/LED gel paint on a liner brush to create lines, then cure.



**19** Now use white UV/LED spider gel to create abstract lines across the nail, then cure.



In this workbook we have combined many techniques to complete this look. The base is created using a marbeling method to combine colors for a nice, light & blurry-effect to the background. Stamping a strong design to one side in nail polish adds drama to the scene, while UV gel polish is used to paint on the tropical floral spray & spider gel is applied to give the final detailing & dimension.