

BACK to basics

3D NAIL ART ROSES



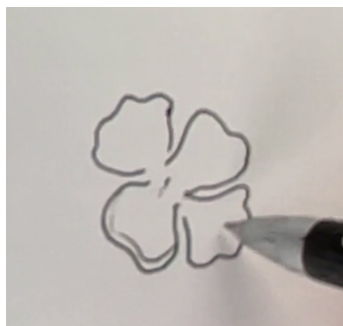
WHAT YOU NEED

L&P Acrylic artificial nail system (monomer & clear, white & colored powders), L&P acrylic brushes, lint-free wipe, dappen dish, pen & paper for planning

GETTING PREPARED

Place on your nail desk your choice brand of L&P acrylic monomer liquid & polymer powder, a dappen dish, lint-free wipes & wax paper with the #6 & #3 brushes & a desk lamp to see your work clearly, since you are working in miniature.

PLANNING THE ROSE DESIGN



1 To plan a flower design, draw a circle, cut it in half with a line & place your petals inside it. Then design your rose by placing 4 petals, in a circle while giving each petal a swirly line in its shape. The drawing will show the rose looking thin & flat, resembling a 4-leaf clover.



2 The second layer of petals needs to stack across the first layer of petals. This layer will be thicker, yet will use slightly smaller beads. Continue to stack the petals by overlaying them between the lower petals to build up the rose.



3 When creating miniature roses, 2 layers of petals may be enough to present the flower, or there may be enough room to add a last layer in the very center. If adding this third layer, pick up a tiny bead, place it, with the brush upright in the center & lean back to form the petal. Create a spiral effect in the center of the flower to make it seem as if the flower is opening up.



4 The leaves of a rose are larger than other flowers, so create a wider leaf for this style. Add a connecting rose by placing the petals between 2 of the original ones for harmonious composition, using the template of adding flowers showcased earlier in the series. Keep adding leaves, petals & rosebuds until the design feels complete.

Alisha Rimando

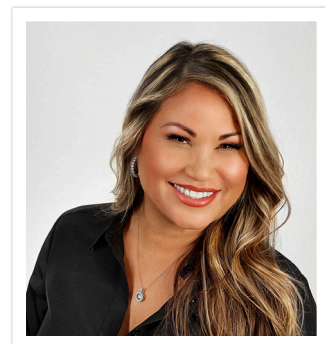


Alisha Rimando is recognized as one of the nail industry's leading experts in training & education. In her 28 years experience, her work has been described as "ground-breaking" as she has been a platform artist & motivational speaker for thousands of promotional & educational events, & competed in hundreds of nail competitions around the globe winning the *World Nail Championship* in 2005 in *Pink & White Sculptured Nails*. She is the featured artist in many training videos, including hosting the current *Milady Standard Nail Technology* DVD Series.

Alisha's expertise & application techniques have been featured in more than 150 beauty & trade publications as a contributing author world wide such as *Teen Vogue*, *Bridal Guide*, *Self*, *Fitness*, & *Seventeen* magazines, as well as numerous industry trade magazines like *Nails*, *Nailpro*, *Scratch (UK)* & *Stylish Nail (Japan)*. Her career took an additional leap in 2008 as a contributing author to *Milady Nail Technology* & *Standard Cosmetology* textbooks, a consistent honor she engages with each new edition.

Through the years, Alisha has worked with R&D chemists to develop nail enhancement products, nano technology skincare, cuticle treatments, polish collections & natural nail treatments. Alisha's artistic creations have been sought after for numerous ads & campaigns as well as garnered celebrity status being featured with Jennifer Hudson in her video "Spotlight" & leading teams at NYC Fashion Weeks.

Her passion for educating the nail community takes her on another adventure with the conception & development of *GlossaryLive.com*



Alisha Rimando

GLOSSARYLIVE

USA

alisharimando.com

IG: @alisharimando

MAKING 3D FLOWERS

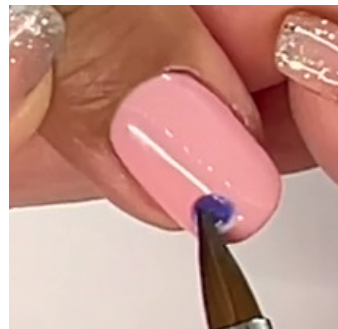


5 Choose several colored powders to create your palette.



PRO TIPS

- Use a #3 or #4 brush for your rose sculpting. A stiff brush allows you to use pressure to flatten out the beads.



6 To start your design, double-dip your brush in an accent color & a white colored powder, let off excess & wait until creamy. Apply to the nail keeping the darker color on the inside of the petal.



7 Place your brush near the center of the flower & lean back, then spread your petal out nice & thin. Remember, at this stage we are focusing on the rose looking like a 4-leaf clover.



8 Double-dip the brush & pick up the second bead, placing it opposite the first bead.



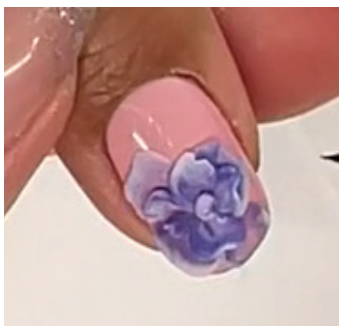
9 Take a smaller bead & place the third bead on the nail. Pick up & place the fourth bead. You can see the double-dipping is creating a stunning gradient of color adding to the rose's dimension.



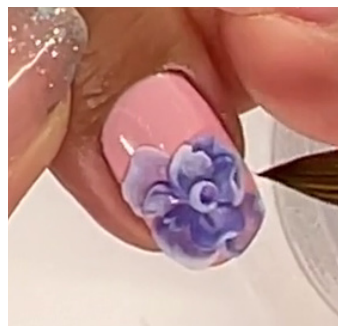
10 The first layer of petals is now placed in a circular shape, it is flat & thin, ready for the next layer of stacked petals to be added.



11 Double-dip your brush & pick up the first bead to start the second layer of the rose. Place the bead between 2 petals of the 4-leaf clover. Place the brush towards the center of the flower & lean back, not too much, as you want to create a thicker/higher petal over the first layer. Use the tip of your brush to lift up the edge of the petal.



12 Keep adding your petals with small beads of double-dipped product. Use the tip of the brush to lean back and then lift up the petal to give the flower its movement. Keep definition in the flower by double-dipping & giving each petal some height. To complete the rose, dip into the white powder & place the bead in the center of the rose.



13 Put the tip of your brush in the center of the bead & create a hole, stretch the hole out, breaking it apart & turn it into itself, creating a swirl.

PRO TIPS

- The drier the bead, the higher it will stand up. So work with drier beads as you get closer to the center of the flower.



14 Double-dip the brush into alternate colors & pick up a bead to create the first leaf. Position the bead between 2 petals, then place the tip of your brush towards the center. Use the tip of your brush to cut in the veins & shape the leaf. Keep adding leaves to fill in the design.

FINAL RESULT



In this workbook the art of sculpting a 3D rose was demonstrated alongside the double-dipping method of using 2 colors simultaneously to add depth & a color gradation for a more realistic effect. Strong texture & color, the technique of building up a rose layer by layer using slightly drier beads with each round of beads, was fully explored.