

# MASTER class

## ADVANCED COLOR COMBINATIONS



Lisa  
Boone



Lisa Boone has over 20 years' experience in the nail industry. The wide berth of knowledge she's accrued has taken her from behind the chair, to the competition circuit & researching innovative products to assisting technicians in their quest to create better products & services in the salon.

Lisa began her career as a nail tech in Chicago in one of its first nail-only salons & soon became the award-winning hands behind Tom Holcomb's world champion nails. After traveling the competition circuit for over 15 years, she became intrigued with developing winning formulations & cultivated a love for researching new & improved products for the industry.

Playing a crucial role in the R&D of new formulations for various industry manufacturers, Lisa has since won awards for both packaging & new product development in the beauty industry. As well as being credited for "best new product" awards by industry professionals & magazines across the globe.

Lisa has judged for the 2nd World Championships, is a staple on the global judging circuit for Nailympia Competitions worldwide & can be seen all over the world as an international educator.



Lisa Boone  
LISA B NAILS

Downers Grove, Illinois, USA  
www.lisabnails.com  
IG: @laboonedoesnails

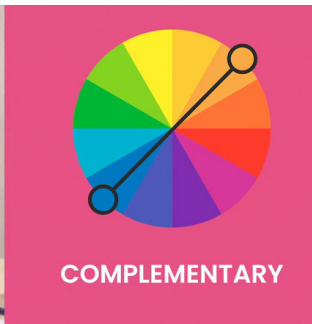
### WHAT YOU NEED

Color wheel, analogous UV/LED gel polish colors, palette, short oval nail art brush, liner brush, flat, long oval brush, UV/LED gel top coat, UV/LED lamp.

### GETTING PREPARED

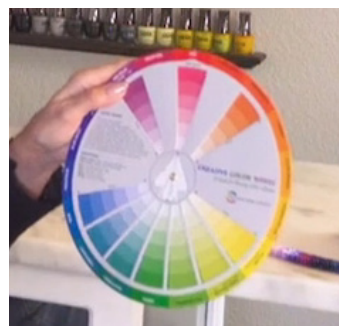
Set your table up with the materials you'll be using for an uncluttered working space. Place the nail tip, gel polish & plexiglass tray with your chosen colors on the table. Place the tip directly in front of you.

## COMPLEMENTARY COLOR PALETTE



**1** Complementary colors sit directly across from each other on the color wheel. These colors contrast each other, such as red & green.

**2** Complementary colors are not harmonious. To create harmony, you need to bring in a neutral shade to balance them. Often white or silver are used to create this balance & make the nail art itself more lively.



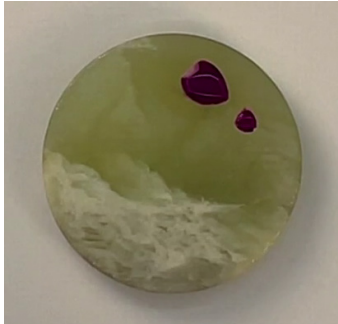
### PRO TIPS

- When using the complementary colors, don't use the shade at a ratio of 50:50, use a smaller amount of one, so that it provides a pop of color on the nail.

**3** Choose your color. Here I choose pink. Opposite pink we see shades of green; for this shade of pink it would be a mint green.

**4** Taking a closer look at the palette, take a look at the purples & find the complementary shades are yellows. The split complementary shades are either side of the yellow; yellow-orange & yellow-green. When designing the art, stay primarily with your base color, for 40% of the art & use the split complementary colors to add details & accents.

## MIXING SPLIT COMPLEMENTARY COLORS



**5** Place a drop of the main nail color on your palette.



**6** Add a dot of the split complementary shade. Here we choose orange.



**7** Add a drop of the other split complementary shade to the palette. Here we add a lime green.



**8** Create any color or shade you need by mixing in white or a lighter primary color (here yellow) to achieve the perfect color.



**9** Now mix the shades; orange & yellow to create a peach shade. Purple with green & then white with purple to expand the colors ready for the nail.



**10** Load the round art brush with the primary color, then dip the tip into the white. Now press the brush down, pull & lift to create the first petal.

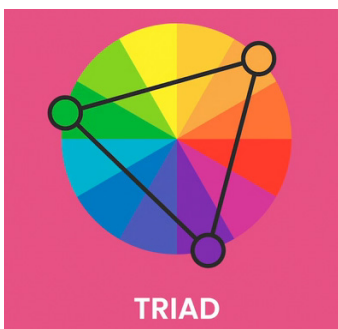


**11** Load the brush with the complementary shade. Press the brush down, pull & lift up.



**12** Load the liner brush with the other complementary color. Press the liner brush down & pull to make comma strokes & create the leaves & add the stem.

## TRIAD COLOR PALETTE



**13** The triad palette is three colors equally spaced. Start with blue-green, then yellow-orange & red-violet.



**14** Add two tones of each of the three triad colors.



**15** Use comma strokes, double dipping into both shades of each of the triad colors.

### PRO TIPS

• Recommend monochromatic art designs for clients that want something different on their nails, but prefer soft or subtle art.



### PRO TIPS

- Use the liner brush to add dots & details for design & interest
- Use colors on top of one another to create interest & movement .

## TRIADIC COLOR NAIL DESIGN



**16** Apply 2 coats of UV/LED gel polish & cure both layers.



**17** Add glitter, if desired, onto the 2nd layer of gel polish color.



**18** Add a layer of UV/LED base gel to smooth the glitter surface, then cure.



**19** Load a flat oval brush with the darkest color & the tip in the lightest color. Create the back petals by starting at the outer edge of the petal & pulling to the center of the flower. Flash cure your back petals & between each layer of your design.

### PRO TIPS

- Apply glitter to the 2nd coat of gel polish color while it's wet to avoid an extra step.



**20** Use a short round brush dipped in the darkest color & white to create another layer of petals.



**21** Use a short round brush dipped in the darkest color & white to create another layer of petals.



**22** Add final UV/LED top coat & cure.



**23** Use a UV/LED gel paint to add final accents of dots & fine lines to create dimension. Then cure.

## FINAL RESULT



In this workbook you've seen how the color wheel can help you choose harmonious, complementary & contrasting colors for a varied, popping and more lively approach to nail art. With this knowledge you can now play around with an endless supply of color combinations in order to widen the scope of your nail art.