

MASTER class

THE ANALOGOUS COLOR SCHEME



Lisa
Boone



Lisa Boone has over 20 years' experience in the nail industry. The wide berth of knowledge she's accrued has taken her from behind the chair, to the competition circuit & researching innovative products to assisting technicians in their quest to create better products & services in the salon.

Lisa began her career as a nail tech in Chicago in one of its first nail-only salons & soon became the award-winning hands behind Tom Holcomb's world champion nails. After traveling the competition circuit for over 15 years, she became intrigued with developing winning formulations & cultivated a love for researching new & improved products for the industry.

Playing a crucial role in the R&D of new formulations for various industry manufacturers, Lisa has since won awards for both packaging & new product development in the beauty industry. As well as being credited for "best new product" awards by industry professionals & magazines across the globe.

Lisa has judged for the 2nd *World Championships*, is a staple on the global judging circuit for *Naillympia Competitions* worldwide & can be seen all over the world as an international educator.



Lisa Boone
LISA B NAILS

Downers Grove, Illinois, USA
www.lisabnails.com
IG: @labooneDoesnails

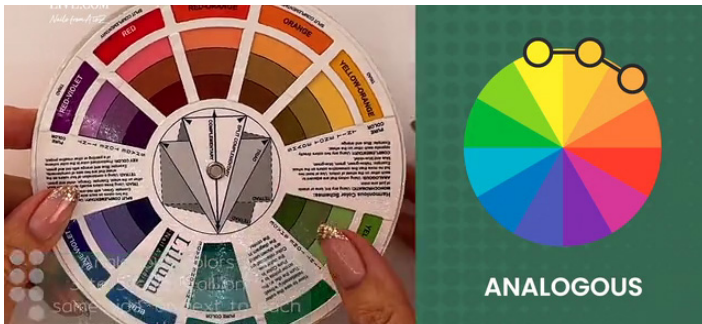
WHAT YOU NEED

Color wheel, analogous UV/LED gel polish colors, palette, short oval nail art brush, liner brush, flat, long oval brush, UV/LED gel top coat, UV/LED lamp.

GETTING PREPARED

Set your table up with the materials you'll be using for an uncluttered working space. Place the nail tip, gel polish & plexiglass tray with your chosen colors on the table. Place the tip directly in front of you.

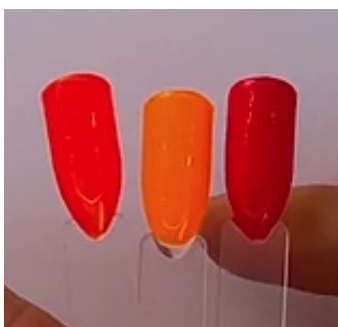
THE ANALOGOUS COLOR PALETTE



1 Analogous colors are the 3 to 5 colors all on the same side or next to each other on the color wheel.



2 Here we choose the red, orange red, orange, yellow orange & yellow palette in the warm tones section.



3 Next choose 3 colors from your analogous palette.

PRO TIPS

- Staying within your colors on the color wheel ensures your colors are harmonious & offer a subtle alternative for clients that want gentle nail art designs.
- Use occasion & client preference to choose the color scheme.

MIXING AN ANALOGOUS PALETTE



4 Apply a dot of your 3-4 analogous colors on your palette.



5 Apply additional dots of color for mixing purposes.



6 Add a dot of white to lighten shades if needed.

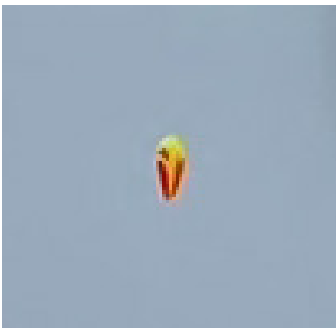


7 Now start adding red into the yellow & experimenting with different shades.

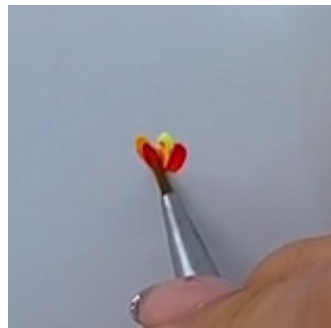
PRO TIPS

- Use a short oval brush to start mixing & explore different color variations

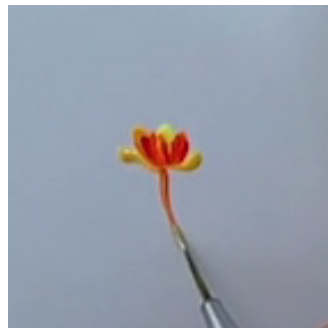
PRACTICING THE COMMA BRUSH STROKE



8 Use orange as the main color for the body of the tulip. Dip in the orange, then the yellow, then a tiny dip into the white. Next press your brush down, pull & lift.



9 To make the petals either side of the first, choose a darker shade. Dip into the orange, then into the red. Next press your brush down & do a comma stroke either side.



10 Take a lighter blend of colors & with your liner brush use the comma stroke technique to create leaves & the stem.



11 Dip into your favored colors as you build up the flower. Use your liner brush to add highlights & details to create depth & contrast. Add dots for fine detailing & as a design feature.

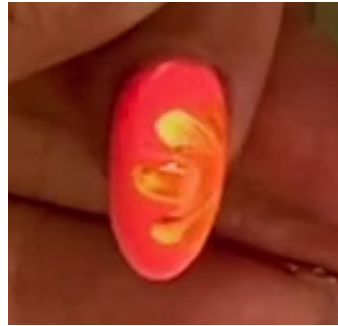
PRO TIPS

- Adding white to any color will help it become more opaque.
- When shading & tinting, ensure there is a significant difference between the colors to create contrast in the design.

USING THE ANALOGOUS COLORS ON YOUR CLIENT



12 Polish the nail with 2 coats of light peach UV/LED gel polish & cure each layer.



13 Take a flat, long oval art brush & load it with orange, then dip into the yellow & white. Press down & lift up when coming towards the center of the flower. Then flash cure the 3 petals.



14 Take the round oval brush to create the second layer of petals. Load the brush in a darker shade such as red & side load the brush with peach & use the comma stroke to add the inner petals. Flash cure after each layer of design is completed.

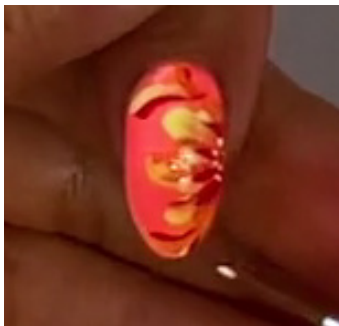


15 Use the liner brush to add comma stroke designs around the flower.

PRO TIPS

- Dipping into more than 1 color at once adds interest to your art while saving time in the salon.
- Always have movement in your lines when creating flowers & other natural works of art.

FINISHING THE DETAILS



16 Add white pollen dots & highlight some of the petals.



17 Cure after the design is completed. Then apply UV/LED gel top coat & cure.



In this workbook, you have learned how to work with the analogous color palette, how to mix the colors together for highlighting & tinting the design as well as applying the brush strokes, picking up more than one color & creating quick, easy harmonious nail art for your clients.