

XXXTREME nail art SUGARED POPPY



WHAT YOU NEED

Magenta, green, black, orange & white gel paints. White gel polish, #6 gel brush, #0 flat point brush, liner brush, fine brush, white-glitter acrylic powder, clear top coat, matte top coat & lamp.

GETTING PREPARED

Prepare your palette with magenta, green, black, white, orange gel paint & gel top coat.

Diana Hernández



Master international educator & judge

An award-winning nail tech, Diana has been working as an international nail educator for over seven years. Keen to stay ahead of industry trends, Diana attends intensive training with international artists, in order to keep her education in line with global advances. Citing global masters such as Alisha Rimando, Ghenna González, Gisela González, Kateryna Gonchar, Fabiola Flores, Guin Deadman, Pisut Masanong, Marco Bonvicini and Krisztina Ujavri, among others, Diana's training has covered every sector of the nail industry giving her a wide berth of expertise to pass onto her students. In 2021, Diana added the title of 'doctorate' for Nailux Premium, to her list of accolades and achievements.

Collaborating with many brands, Diana has participated in global nail expos across the USA, Spain and Mexico while teaching in the USA, Belgium, Spain, Peru, El Salvador, Guatemala, Costa Rica, Puerto Rico and Mexico.

Diana favors working with L&P acrylic, UV gel and acrylic gel for competition nail styling, while her art is a blend of watercolors, acrylic paints, gel polish, gel painting, 3D in acrylic and plasticine.

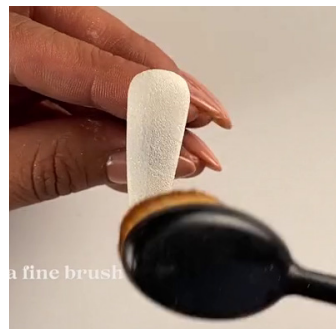
CREATING THE BACKGROUND



1 Polish the nail with white LED gel polish.



2 Pour white glitter acrylic all over the nail tip. Then tap off the excess powder & cure.



3 Brush the nail clean with a fine brush.

CREATE THE POPPY



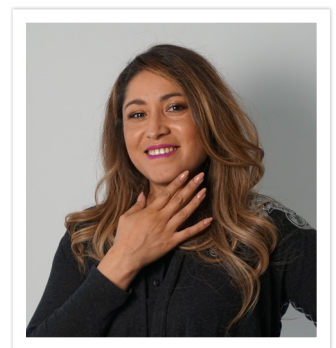
4 Create the outline of the poppy using a liner brush dipped in magenta LED gel paint.



5 Create the stem with black & green LED gel paint & cure.



6 Fill in the center of poppy with black LED gel paint.



Diana Hernández
México

IG: @diana_nailartist



7 Fill in the petals of the poppy with LED white gel paint using a #6 gel oval brush.



8 Blend orange & white LED gel paints & fill in the petals using a #6 gel oval brush.



9 Use top coat on your #0 flat point brush to blend the white & magenta colors to create realistic shading.



10 Create lighter areas by shading the edges of the petals with white LED gel paint.

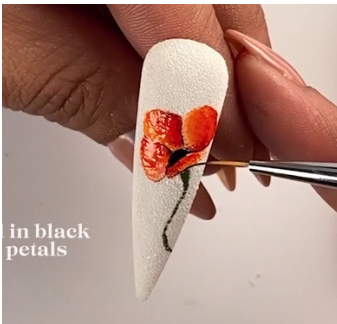


11 Use top coat on your #0 flat point brush to blend the black & magenta to create realistic shading & add depth to the edges of the poppy.



12 Use a flat brush with mixed orange shades to create highlights & definition to the petals.

ADDING THE DETAILS



13 Use a liner brush dipped in black LED gel paint to outline the petals.



14 Use a liner brush dipped in white LED gel paint to define the petals. Then fully cure the design.



15 Use white LED gel paint on a liner brush to create white dots in the center of the flower & define the stem. Use a small flat brush with black to create lowlights and finalize definition to the petals.



16 Apply a matte top coat to the poppy's petals & stem & cure.

XXXTREME *nail art* SUGARED POPPY BY DIANA HERNÁNDEZ



In this workbook you have learned how to create a sugar base for epic nail art while creating light and dark areas for highlights and shadows to give the subject higher definition. The shading details help create more lifelike subjects that will bring your nail art to the next level. Sugaring can be used in many quick nail art designs, it also creates an interesting base that brings strong texture to a set of nails.