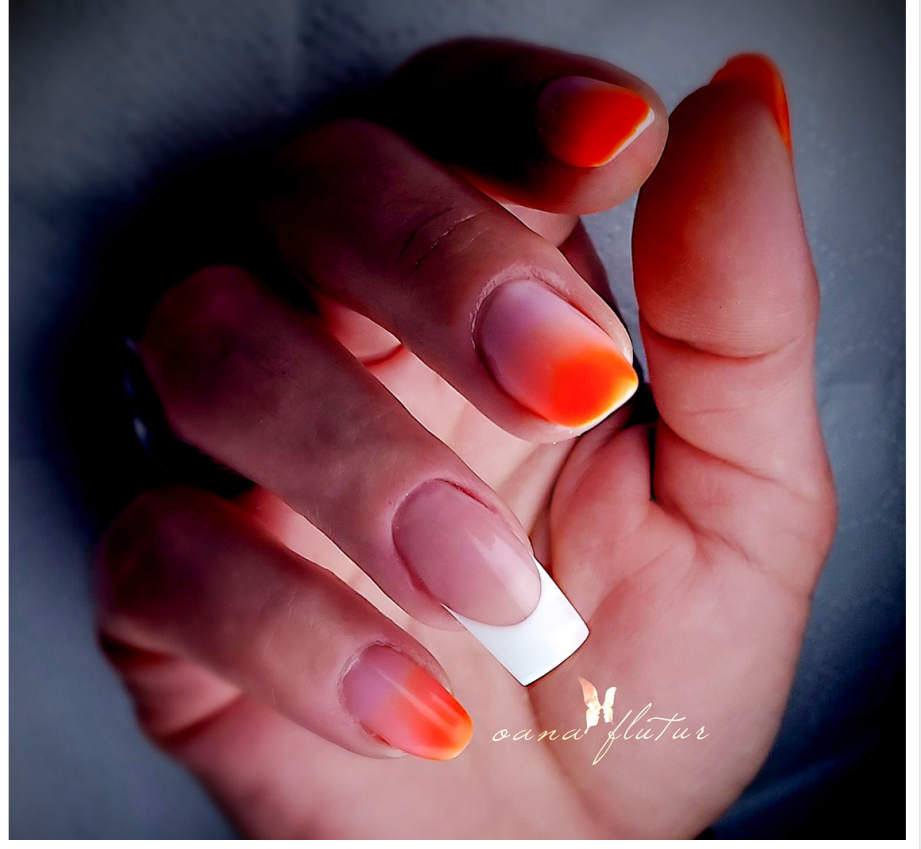


MASTER class

SALON SUCCESS FRENCH



WHAT YOU NEED
UV/LED Clear builder gel, cover builder gel, white builder gel, UV/LED lamp, plastic nail forms, gel brush, lint-free wipes, nail cleanser.

GETTING PREPARED
Prepare your table in an organized manner eliminating cross contamination from the products. Make sure all necessary products are within hand's reach, so the products are ready to use on the nail desk.

*Oana
Flutur*

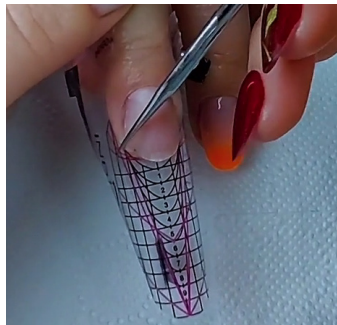


Oana Flutur of Galati, Romania began training in nails in 2006, by 2008 it had become her career. Founder of the *Oana Flutur Nail Artist Academy* & owner of *Salon Champion Galati* salon, Oana has invented 12 different extreme nail shapes, of which she has registered full author rights. Oana is a nail consultant for brands around the world, is a mentor, much decorated champion tech, international educator and judge.

NAIL PREPARATION & FORM APPLICATION



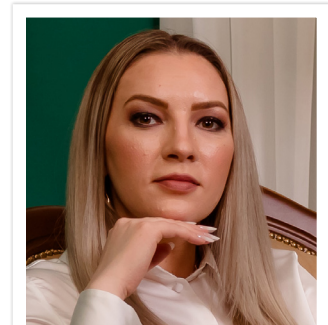
1 Properly prepare the nail for enhancement.



2 Customize form if needed & cut the form at the growth points in the sidewalls to get a snug fit under the free edge.



3 Securely apply nail form.



Oana Flutur
ROMANIA

www.oanaflutur.ro
IG: @oanaflutur.ro_nailart

PRO TIPS

- Ensure the center line of the nail form is in line with the natural nail growth axis.

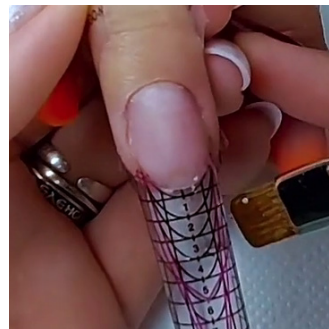
BUILD THE STRUCTURE



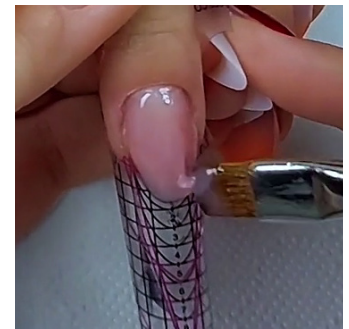
4 If using, apply base gel to the natural nail & cure prior to extending the nail.



5 Create the nail extension from the tip of the natural nail directly onto the nail form using clear UV/LED hard builder gel. Do not apply any product to the natural nail, only onto the nail form.



6 Use small beads to build the free edge & work as thin as possible to have the utmost control over the application. Work by floating the gel into place as you work it along the free edge. When happy, cure it.



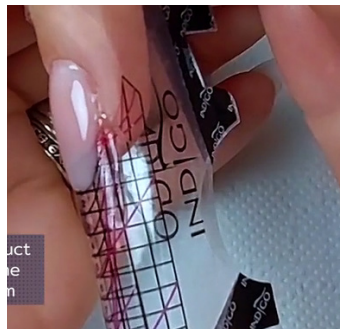
7 Apply a cover pink UV/LED builder gel to create the nail bed. Work with small beads to control the product. Keep the application thin at the cuticle area as you float the product into place.

PRO TIPS

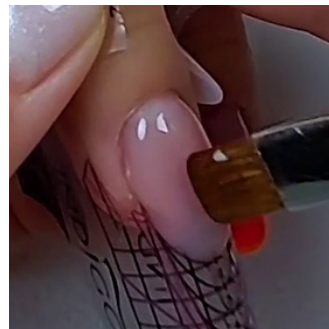
- During competitions, omit the base coat stage to save time.



8 Using your gel brush, carefully define the smile line in the cover gel at the free edge following the line on the nail form.



9 Check the product is uniform on the nail & the nail form down the center & on both sides. Then cure.



10 Use clear gel over the cover gel to build up the nail bed for strength, height & thickness, to meet competition requirements.



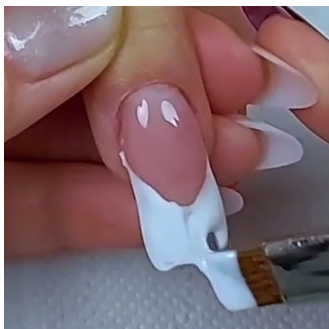
11 Ensure the product is as uniform as possible, lines are straight & the bulk of the product is at the apex zone of the nail. Then clean the smile line with your brush & cure.



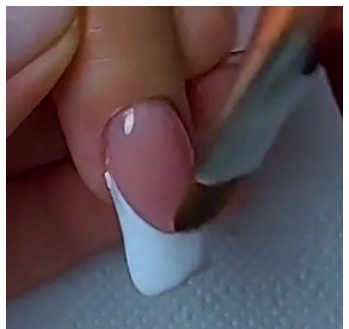
12 Gently remove the nail form.



13 Use white UV/LED builder gel to fill in the free edge. Use enough product to bring it level with the nail bed.



14 Continue to add small amounts of product so you have complete control over the application of the product.



15 Using your gel brush, refine & define the smile line & clean product from around the nail. Ensure the product is thick enough at the smile line & thin around the free edge. Then cure.

PRO TIPS

- Building a nail bed on an extension with a perfect smile line saves time filing during a competition.



16 Pinch in the C-curve.



17 Cleanse away the inhibition layer from the nail using a lint-free wipe.

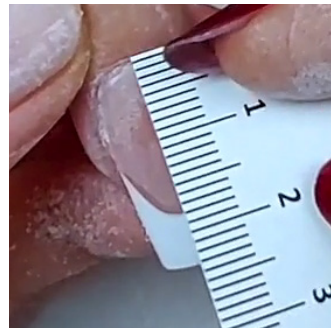
FILING THE STRUCTURE



18 File the nail using a 180-grit file. Start at the cuticle area & then move to the sidewalls.



19 Move to filing the free edge. Then file the surface of the nail, working from the outer edges & moving towards the apex.



20 When competing check the ratio is correct, here it is a 2:1 ratio for the pink & white in the *Salon Success* category.



21 Continue filing by keeping the file perpendicular with the surface of the nail. Next move to refine the apex zone.



22 Clean the dust away with a nylon brush & check for any angles that need further refining.



23 Buff the nail in the same order & movements used when filing.

FINISHING



24 Remove dust & apply UV/LED top coat.



25 Hold the finger upside down to let the gel settle & cure completely.



26 Apply nail oil to the cuticle area for a high shine finish.



In this workbook, you have learned how to create a perfect French nail for the *Salon Success* competition in a square shape. This nail was sculpted using the UV/LED hard gel system working in a 1:2 ratio for the length of the nail bed and the free edge, as is required by some competitions, with a 30% angle for the C-curve. Oana used her specialist technique of sculpting the smile line; no filing was undertaken to create the smile line, as this is the easiest way to achieve a perfect result without compromising on time.