

MASTER class

FRENCH TWIST



WHAT YOU NEED

Builder gels in clear, white, light pink and cover pink, glitter for special effects, nail forms, 180-grit file, buffer, gel brush, stork scissors, ruler, orangewood stick, palette, cleanser, lint-free wipes, manicure brush, liner brush, UV top coat, UV lamp, nail oil, pinch sticks and pinch clamp..

GETTING PREPARED

Prepare your table in an organized manner eliminating cross contamination from the products. Make sure all necessary products are within hand's reach, so the products are ready to use on the nail desk.

*Oana
Flutur*



Oana Flutur of Galati, Romania began training in nails in 2006, by 2008 it had become her career. Founder of the *Oana Flutur Nail Artist Academy* & owner of *Salon Champion Galati* salon, Oana has invented 12 different extreme nail shapes, of which she has registered full author rights. Oana is a nail consultant for brands around the world, is a mentor, much decorated champion tech, international educator and judge.

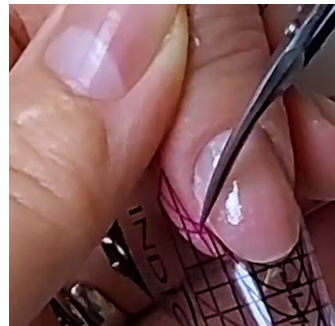
NAIL PREPARATION & NAIL FORM PLACEMENT



1 Properly prepare the nail for enhancement. Apply base gel to the natural nail & cure.



2 Prepare your nail form to fit it snugly to the nail.



3 Customize the nail form if necessary. Cut the nail form at both growth points in the sidewalls to get a snug fit under the free edge.

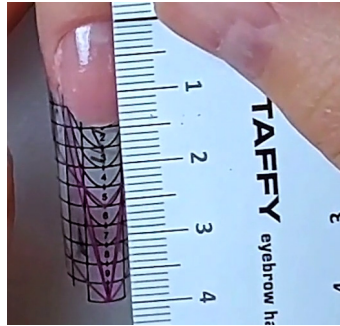


Oana Flutur
ROMANIA

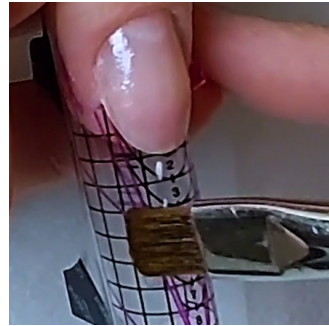
www.oanaflutur.ro
IG: @oanaflutur.ro_nailart



4 Check form placement as the center line of the nail form must be in line with the axis.



5 Measure out your nail length to decide exactly where you will be placing the sculpted free edge.



6 Create the nail extension with clear UV builder gel from the length desired on the form to the separation line. Do not place any product on the natural nail.



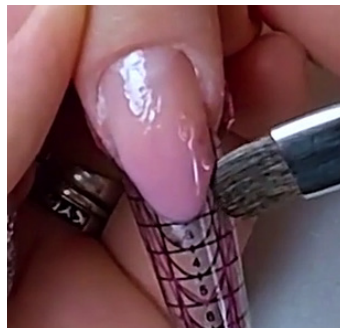
7 Float the builder gel into place with your brush & cure. Only use small beads of product in order to get maximum control of the product application.

PRO TIPS

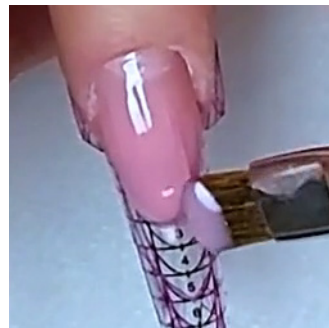
- When creating a competition style French Twist, you should have a 1:1 ratio with a 50% C-curve.



8 Apply a small bead of UV builder cover gel & begin to sculpt the nail bed in an oval shape. Take the product only halfway up the nail plate.



9 Use your brush to clearly define the smile line & cure.

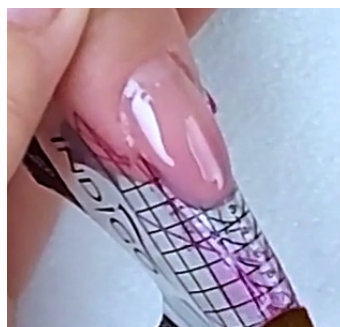


10 Apply a second application of cover builder gel to the nail plate, keeping it thin towards the cuticle area. Again clearly define the smile line with your brush & cure.

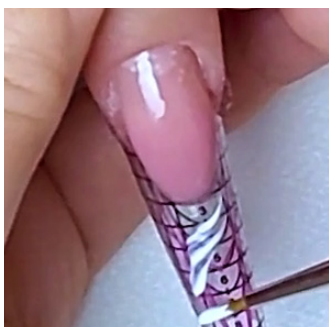
CREATING THE INLAID TWIST



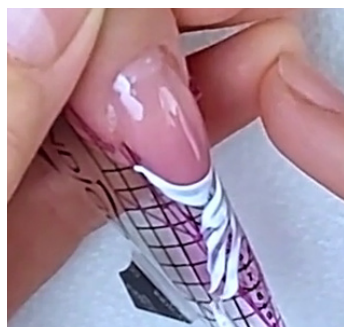
11 Place a translucent fuchsia gel with clear builder gel & mix together. This creates a 'glass' builder gel effect.



12 Float a thin layer of this gel mixture onto the clear free edge extension & cure.



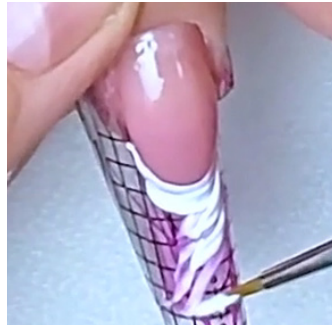
13 Using white builder gel, begin to create your inlaid design over the sculpted free edge.



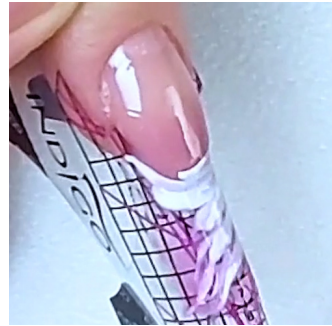
14 Drag white builder gel from one side of the nail to the other, creating shapes that resemble wings or feathers. Now cure.



15 Float a layer of the pink gel mixture over the white design & cure.



16 You can leave the inlaid design as one layer or, to add complexity to the design, you can layer more white gel into the design to give depth & dimension. Cure every layer of the design as you apply it.



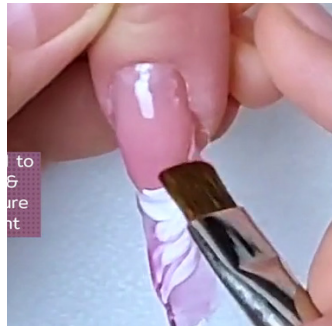
17 Apply a clear layer of builder gel to fully encapsulate the design & cure.



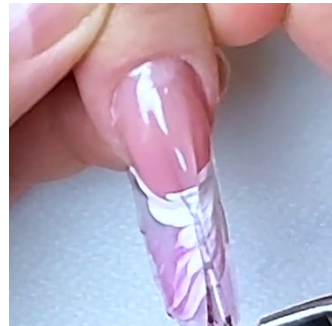
18 Gently remove the nail form.



19 Trim away the excess product from below the lower arch.

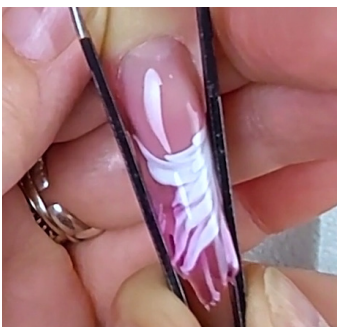


20 Use clear builder gel to encase the design & complete the structure of the enhancement & cure.

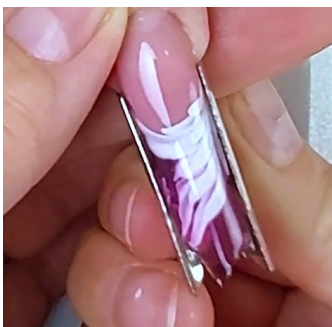


21 Float another bead of clear builder gel over the enhancement to level the surface. When the product is level, cure.

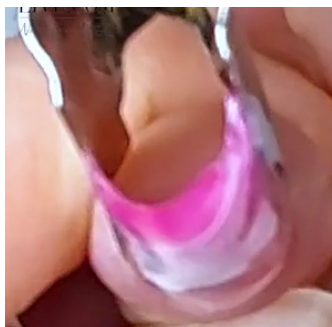
THE C-CURVE



22 Using pinch sticks, pinch the C-curve into place pinching from the stress points to the free edge.



23 Apply a pinch clamp to hold the C-curve during the final curing process.



24 Check the C-curve to make sure it is as you require it, then cure the nail completely.

FILING THE STRUCTURE



25 Cleanse the inhibition layer from the nail enhancement.



26 Start the filing process using a 180-grit file. Start gently in the cuticle area.



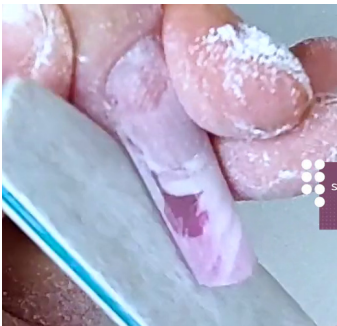
27 Then move to filing the sidewalls.



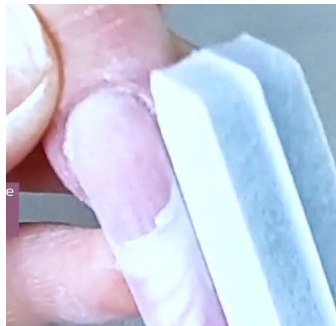
28 With the file perpendicular, file the free edge.

PRO TIPS

- When filing sidewalls, ensure your file is always perfectly parallel with the lateral sides.



29 File the lower arch & the surface of the nail, working from the outer edges & moving towards the apex.

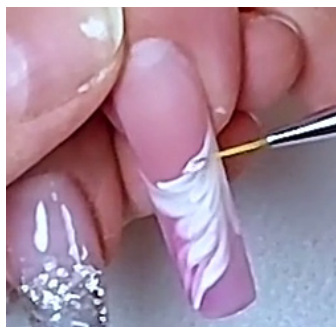


30 Now take your buffer and follow the exact same movements as you did with your file & buff the entire nail.

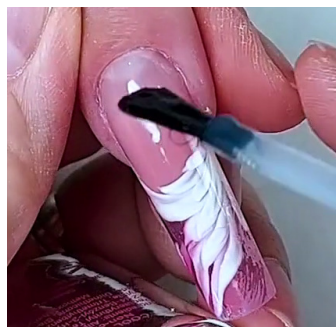
FINISHING



31 Wipe away all dust & debris using a stiff manicure brush & a lint-free wipe.



32 Before applying top coat, use a liner brush with white builder gel & define the French twist design at the smile line where some may have been lost during the filing process. Then cure.



33 Apply a smooth coat of UV top coat & cure.



34 Apply nail oil to the cuticle area & surrounding skin & massage into the area to give the nail a high shine.



In this workbook you have learned how to create a French competition nail with a twist. To give this originality & complexity, the design has been layered inside a clear gel free edge meaning the design is encapsulated to give depth & dimension. The clear free edge is then built from a blend of clear and pink in order to give a hint of color to the free edge, as if looking at glass. This allows the French inlay design to pop out and appear as if the French design is floating inside the nail.