

MASTER class

THE VECTOR FRENCH SHAPE



Oana
Flutur



Oana Flutur of Galati, Romania began training in nails in 2006, by 2008 it had become her career. Founder of the *Oana Flutur Nail Artist Academy* & owner of *Salon Champion Galati* salon, Oana has invented 12 different extreme nail shapes, of which she has registered full author rights. Oana is a nail consultant for brands around the world, is a mentor, much decorated champion tech, international educator and judge.



Oana Flutur
ROMANIA

www.oanafutur.ro
IG: @oanafutur.ro_nailart

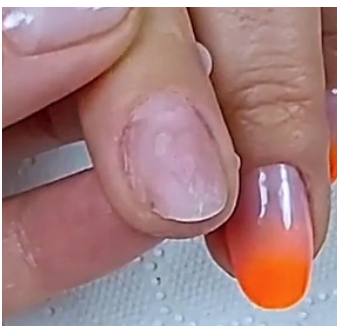
WHAT YOU NEED

White acrygel, cover pink acrygel, spatula, pinch sticks, pinch clamp, extreme nail form, ruler, lint-free wipes, nail cleanser, manicure brush, base gel, top gel, nail oil.

GETTING PREPARED

Prepare your table in an organized manner eliminating cross contamination from the products. Make sure all necessary products are within hand's reach, so the products are ready to use on the nail desk.

NAIL PREPARATION & FORM APPLICATION



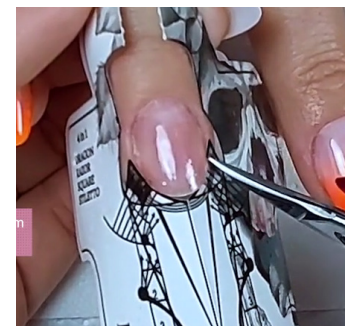
1 Prepare the natural nail for product application & clean away all dust & debris from above & underneath, then wipe away all oils from the nail plate ready for nail form fitting.



2 Apply a coat of base gel & cure.



3 Choose your extreme nail form. This needs to have a fold down the center & 2 diagonal folds on the sides in order to create the vector shape.



4 For a snug fit under & around the nail plate, customize the form to fit the natural nail.



5 To customize this nail form, draw 2 diagonals from the point where they will be coming directly out from the growth points. Then, to define the Vector shape on the form, fold & crease along the lines you've drawn.



6 Cut the nail form at the growth points in the sidewalls to get a snug fit under the free edge.



7 Close the end of the nail form to create an extremely sharp end to the nail, the sides must be straight before securely fitting the nail form to the nail.

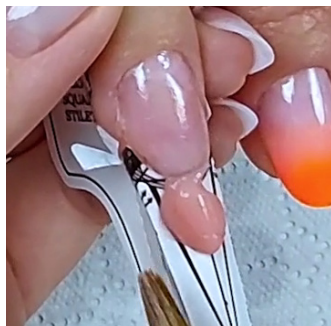


8 Make sure the nail form fit is precise. It must be straight with the center line, in line with the axis.

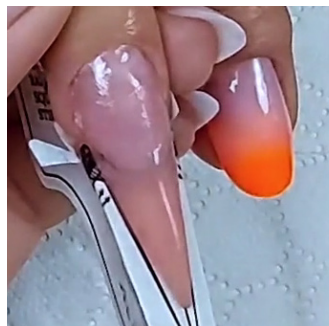
BUILD THE STRUCTURE



9 Once the form is fitted, measure to work out the exact point where the cover pink & the free edge will meet. When ready, fit the nail form.



10 Using a cover pink acrylic & an acrylic brush, build the extension of the nail bed.



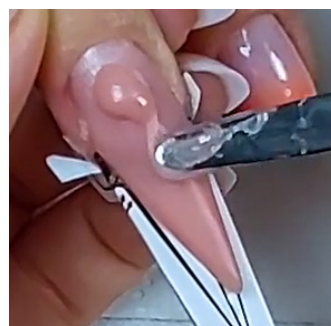
11 Build the elongated nail bed in 3 thin layers of product, curing between each layer. Define the smile line using the brush, this saves time with filing. Once it is defined & shaped, then cure.



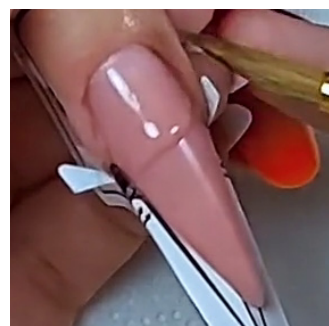
12 Place the second bead of acrylic in the middle of the natural nail & gently press the product into place. Keep the pressure of your strokes equal on both sides & keep the strokes very short & gentle.



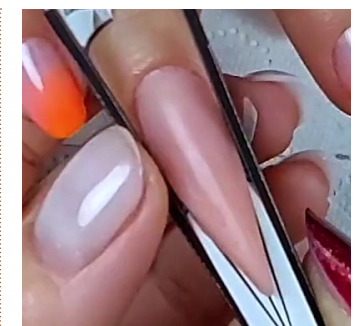
13 Define smile line & cure.



14 Place the 3rd bead of acrylic at the apex of the nail.



15 Gently pat & press the product into the cuticle area & then blend it down the nail.



16 Cure the nail & pinch in the C-curve

PRO TIPS

- Building a nail bed on an extension with a perfect smile line saves time filing during a competition.



17 Use a pinch clamp to keep the C-curve in place.



18 Create the white free edge using acrylic, starting along the pink extension at the separation line. Create this free edge using very small beads of product, to give you more control as you work.



19 As you sculpt, guide your product along the angles & lines on the nail form. Blend the surface of the French extension with enough product to be level with the nail bed & cure fully.



20 Place another bead of white acrylic on the nail form to continue building the French extension.



21 Continue adding small beads of product until you have reached the length of your extreme nail shape.



22 Add a bead of white acrylic to a lateral side of the form to create a triangular lateral shape.



23 Once you are satisfied with the shape & the product is level at the transition point, then fully cure.



24 After curing for a few seconds, pinch it with pinch sticks, then place on a pinch clamp & cure it fully.

FILING THE STRUCTURE



25 Remove the nail form & cleanse the inhibition layer from the nail.



26 File the nails with a 180-grit nail file.



27 File the surface of the nail working from the outer edges & moving towards the apex. Then file the lower arch.

PRO TIPS

- When filing sidewalls ensure your nail file is always perfectly parallel with the lateral sides.

FINISHING



28 Remove all dust & apply a very generous layer of gel top coat.



29 Turn the nail upside down & clean away any excess gel top coat from the edge of the nail structure. Then give it a last check & cure completely.



30 Apply a single drop of nail oil & use this to further shine up the new nail shape.



In this workbook you have learned how to sculpt the Vector French extreme nail shape invented by Oana Flutur.