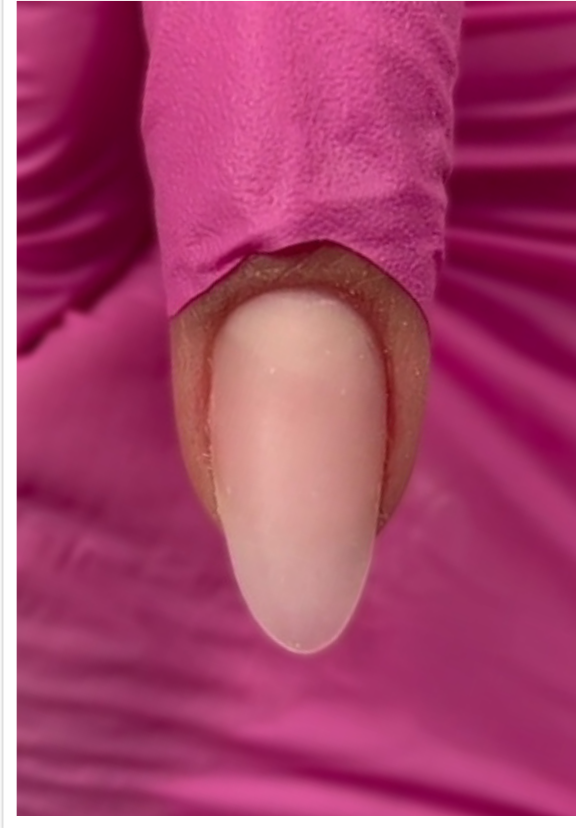


MASTER class

FOUNDATION OF NAIL STRUCTURE



Giselle
Caballero



Originally from Mexico City, Giselle Caballero married and moved to Kelowna, BC, Canada. Nails soon became her passion and she opened Ego Beauty Academy and Studio in 2015. Giselle teaches one-on-one trainings in the latest nail trends and offers bespoke services at the highest quality to her clients.

In 2020, Caballero won *NAILS Next Top Nail Artist* for Season 7. Giselle is currently a content creator working with some of the best brands out there and continues to teach, create and inspire. "I love the joy my work brings to others, whether it's bringing to life a new creation for my clients or guiding my students in class. It's amazing how the things that may seem little, can make such a huge difference in our lives, nails are my happy place!"

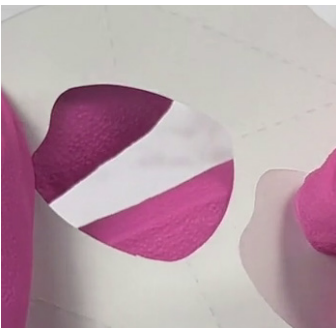
WHAT YOU NEED

Nail forms, gel brush, cuticle scissors, marker pen, cover pink UV/LED gel system, UV/LED lamp, orangewood stick, lint-free wipes

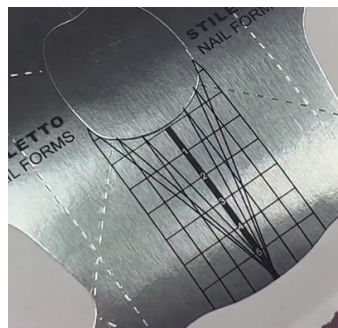
GETTING PREPARED

Prepare your table in an organized manner eliminating cross contamination from the products. Make sure all necessary products are within hand's reach, so the products are ready to use on the nail desk.

CUSTOMIZATION & NAIL FORM FITTING



1 Start by removing the center sticker of the nail form & place it on the back of the form to provide extra support.



PRO TIPS

- Added flaps at the top & bottom of the nail form allow you to properly adjust it to fit the client's finger



2 Roll the form between your thumbs to give it more flexibility when creating the C-curve on the nail extension.



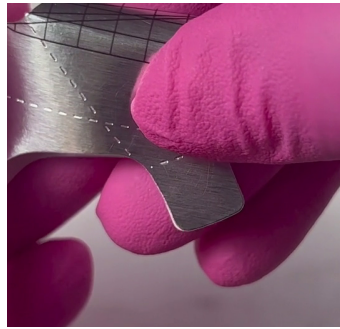
GISELLE CABALLERO

Mexico & Canada
egobeauty.ca

IG: @egobeauty.ca



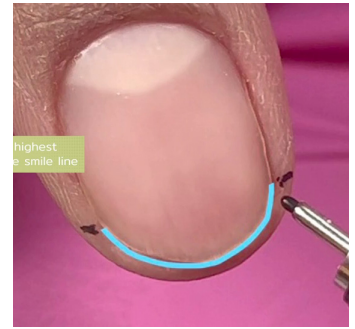
3 Tear open the back of the nail form.



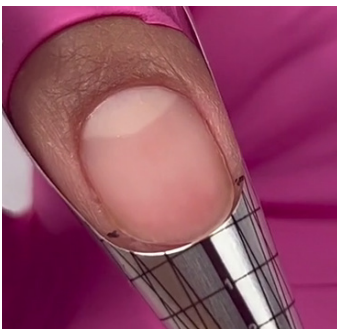
4 Press the two front flaps together, making sure they match equally.



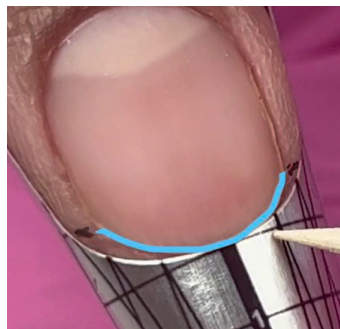
5 Mark the highest points of the smile line either side of the nail plate.



6 The shape of the free edge will need to match the curvature of the nail form.



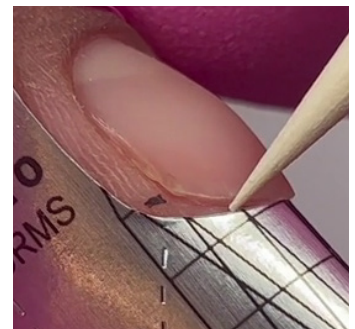
7 Place the nail form under the free edge.



8 When the nail form does not match the shape of the smile line, use the markings to guide you on what to cut from the nail form in order to get a snug fit with no gaps.

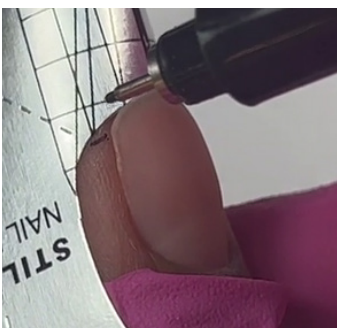


9 The nail form must be as wide as the natural nail. If it's wider, the extension will also be wide.



PRO TIPS

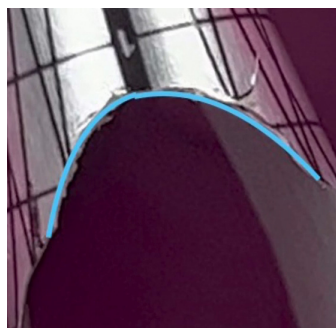
- Gaps in the nail form will allow seepage of the product onto the skin & create cracks in the structure of the nail extension.



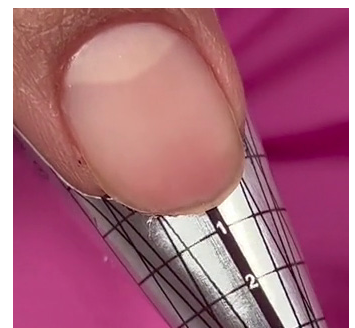
10 Mark the nail form where you need to cut it, in order to correct it so it fits the shape of the natural nail & its width.



11 Cut the nail form to the width of the natural nail & the shape of the free edge.



12 The nail form should now match the curvature of the natural nail.

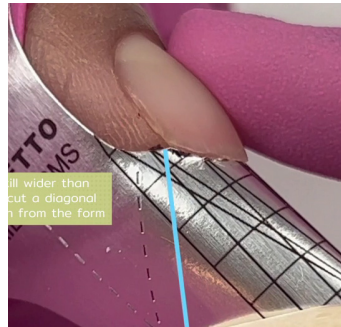


13 Place the customized nail form snugly onto the nail.

FOUNDATION OF NAIL STRUCTURE BY GISELLE CABALLERO



14 If the nail form is wider than the natural nail it will require further customization.



15 To address the width of the form, cut a diagonal to release tension from the nail form.



16 The diagonal guidelines on the nail form may not match the needs of your client. So it's essential you measure the width of your client's nail & cut accordingly.



17 Place the nail form on the finger & pinch it to the width of the nail plate.



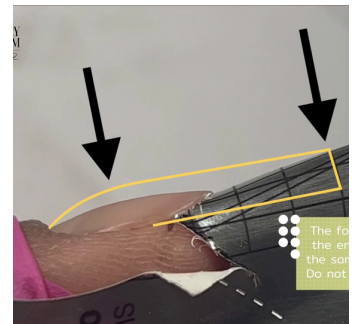
18 Align the nail form to match the direction of the natural nail to create a straight extension.



19 Straighten the nail form by viewing the finger from the knuckle to the end of the nail form in a vertical line from the top to bottom.



20 Secure the customized nail form in place by firmly pressing its flaps together.



21 The form must be placed so the end of the extension is the same height as the apex. Do not allow the form to drop.

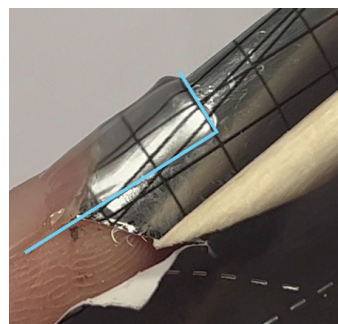
SCULPTING THE SQUARE NAIL STRUCTURE



22 Check for any gaps between the nail form & the free edge before you apply your product.



23 Working with the acrylic system allows time to sculpt & mold the nail extension without flooding the nail.



24 Align the product with the side of the natural nail to prevent the extension looking hooked.

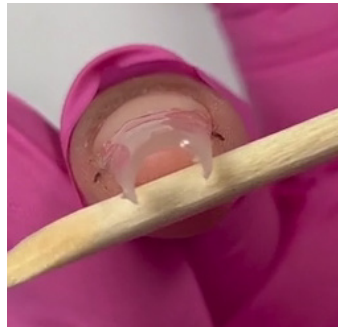


PRO TIPS

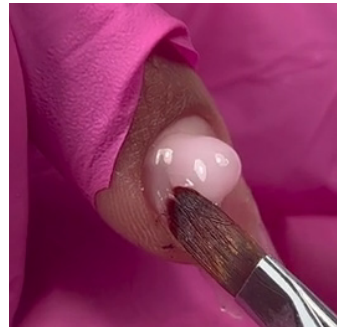
- If using the acrylic system, pinch the extension halfway through the cure to enhance the C-Curve.



25 Gently remove the nail form to avoid any cracking of the new extension.



26 *Voilà!* Check to see a nice, strong C-curve.



27 Apply your cover pink bead close to the cuticle, then pat, press & drag it down the nail.

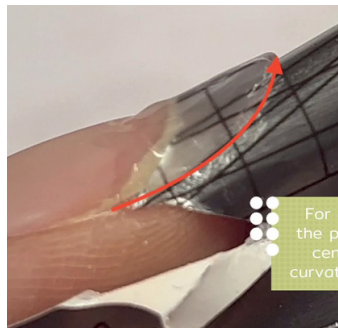


28 Finish filing & check the nail from all angles.

SCULPTING A ROUND NAIL STRUCTURE



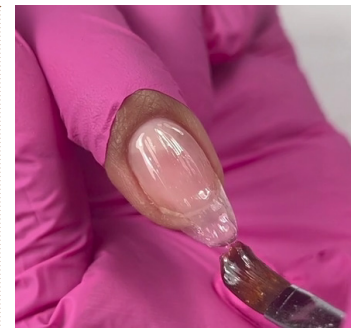
29 Size, trim & customize the nail form to fit the finger.



30 When sculpting a round nail, angle the product towards the center to create the curvature of the free edge.



31 Pinch the nail halfway through the cure to enhance the C-curve.



32 Apply cover pink gel, starting at the cuticle, then pat, press & guide it gently down the nail.



33 Avoid overworking the gel, place thickest amount of product at the apex & keep the product thin at the cuticle and the tip of the nail.



34 After you have completed the filing, continue by sealing the nail & adding art on top if required.

In this workbook you have learned how to successfully tailor a nail form in order to get the correct, snug fit to the natural nail before applying product. Giselle has demonstrated the steps that are necessary to make sure there are no gaps to the sides or along the curvature of the free edge. Assessing the form fit at every stage, Giselle explained the steps needed to fit the form straight without dropping, to ensure the architecture of the nail is aligned correctly for a strong structure.