

# TAG THAT *trend* NIGHT SKY



*Dani  
Bailey*



### WHAT YOU NEED

OPI GelColor in Lady In Black, Stay Matte Top Coat, Platinum Eclipse, Stay Shiny Top Coat, Magpie Inks in white and clear, Magpie Gel Polish in Blue Jelly and Green Jelly, OPI Chrome 'Tin Man Can'

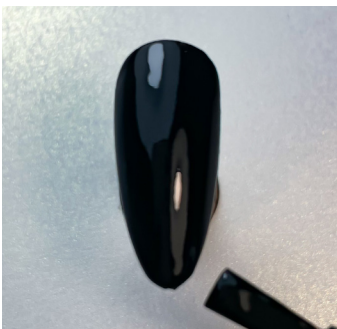
### GETTING PREPARED

Prepare your table in an organized manner eliminating cross contamination from the products. Make sure all necessary products are within hand's reach, so the products are ready to use on the nail desk.

Dani is a Brazilian luxury manicurist/nail artist living in the UK, and has been obsessed with nails since childhood. Since setting up her business in Wales, she has won many awards in the circuit for her art, including *TrendVision Nail Technician of the Year UK & Ireland 2021*.

She is a content creator and ambassador for OPI Brazil and OPI UK&I NailBoss, and is passionate about spreading in depth nail knowledge in both hemispheres.

Dani also bagged the title of *Most Improved Nail Technician at Nail Safari 2022*, where she got to rub shoulders with the best in the industry. Dani is currently a finalist for *Home Salon of the Year at Scratch Stars 2023*. Dani is mom to two little girls.



**1** Apply two coats of black gel polish & fully cure both layers.



**2** Apply matte top coat & cure



**3** Apply white alcohol ink along the length of the nail at a diagonal.



**4** Disperse it across the nail tip using acetone to give it a cloudy effect.



**5** Apply top coat to lock in the design & cure. Now cover the entire nail with an ombré created using blue, purple and green jelly glass gel & fully cure.



**6** Dab a little holographic/iridescent chrome powder onto the cured product.



**DANI BAILEY**

Brazil & UK

IG: @danibaileynailartist



**7** Apply one coat of silver cat eye gel & move the particles away from the central design using a magnet, then cure. Next, top coat the design & cure.



**8** Take white gel paint & use a dotting tool to place random small dots on the nail. Then use a striper brush to drag the paint to create stars.



**9** Mix top coat with white gel paint & use a larger dotting tool to create a 'halo effect' around the stars. Fully cure & apply top coat to complete the design.



In this workbook you have learned how to create the popular galaxy nail trend across the nails using UV gel paints, jelly glass gels and holographic powder. Special effects then came onto play when applying cat eye gel and using a magnet to move around the particles to give the idea of the depth of the night sky.