

XXXTREME nail art FRENCH STILETTO



WHAT YOU NEED

Extreme nail forms, cover pink gel, white builder gel, clear builder gel, UV lamp, gel brush, ruler, pinch clamp, pinching tweezers, lint-free wipes, nail cleanser, 180-grit file, buffer, nail oil, manicure brush, base & top coat gels.

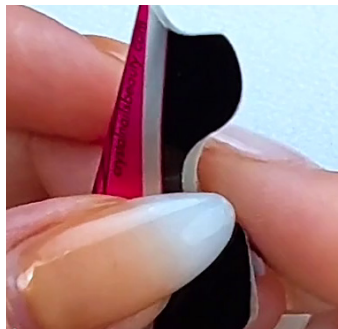
GETTING PREPARED

Prepare your table in an organized manner eliminating cross contamination from the products. Make sure all necessary products are within hand's reach, so the products are ready to use on the nail desk.

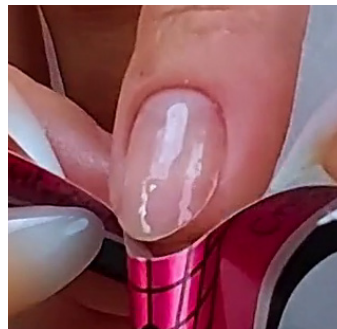
PREPARATION & FORM APPLICATION



1 Prepare the natural nail & apply base gel & cure.



2 Prepare the nail form by pinching its tabs together to close the tip of the form.



3 Place the form on the finger between the hyponychium & the nail plate.



4 Customize the nail form to get a snug fit to the natural nail.



5 Cut the nail form at the growth points in the sidewalls to release tension & fit the form more snugly.

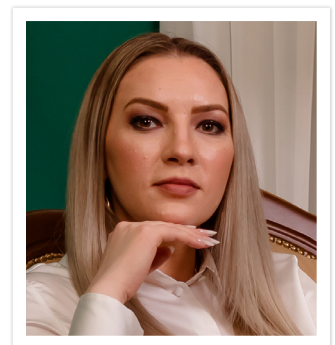


6 Check the lines on the nail form are in a straight line with the growth line of the nail.

Oana Flutur



Oana Flutur of Galati, Romania began training in nails in 2006, by 2008 it had become her career. Founder of the *Oana Flutur Nail Artist Academy* & owner of *Salon Champion Galati* salon, Oana has invented 12 different extreme nail shapes, of which she has registered full author rights. Oana is a nail consultant for brands around the world, is a mentor, much decorated champion tech, international educator and judge.



Oana Flutur

ROMANIA

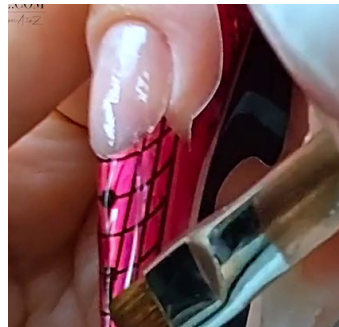
www.oanaflutur.ro

IG: @oanaflutur.ro_nailart

SCULPTING THE NAIL EXTENSION



7 Create the nail extension using clear builder gel in the length desired following the guidelines on the nail form up to the separation line.



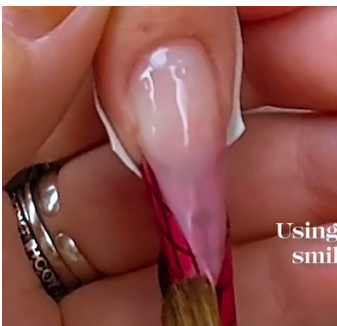
8 Float gel into place with brush & cure.



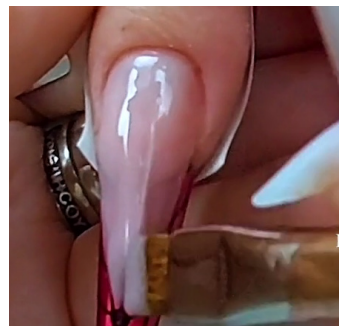
9 Check ratios to determine nail bed extension length.



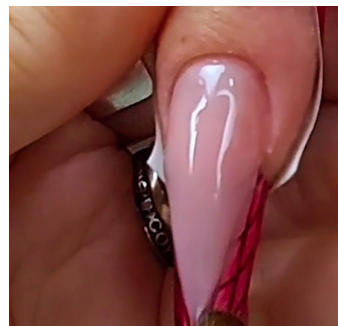
10 Apply a cover pink builder gel & create the nail bed extension.



11 Use your gel brush to define the smile line at the end of the cover pink.



12 Check that the product is uniform on the nail form & cure. Repeat for a second coat of builder gel on the nail bed.

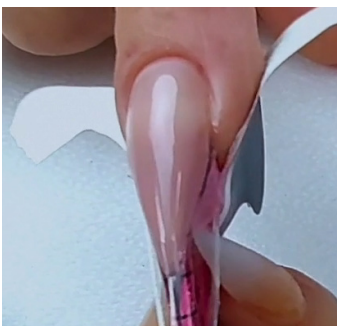


13 Build up the apex with cover pink gel.

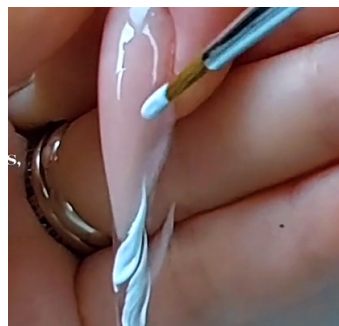


14 Clean the smile line & fully cure.

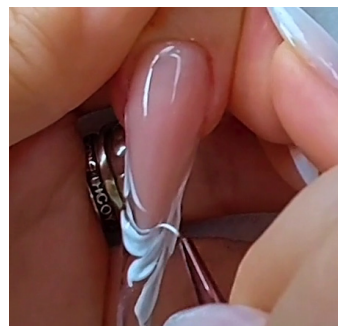
CREATE INLAID DESIGN



15 Gently remove the form from the nail extension by pulling down and away from the hyponychium.



16 Using white builder gel & a gel brush, press, twist & drag lines on the stiletto extension, creating an intricate flowing design.



17 Use white builder gel & a striper brush to create fine lines around the nail bed extension to give the illusion of movement.



18 Use clear gel over the entire enhancement to encase the first layer of the inlaid design & cure.



19 Apply white builder gel with a gel brush, then pat, press, twist & drag the lines to create a second layer of the inlaid design. Cure when the design is complete.



20 Apply another coat of clear gel, encasing the entire nail enhancement & fully cure.



21 Use a mixture of white & pink gel to add designs to frame the nail bed.



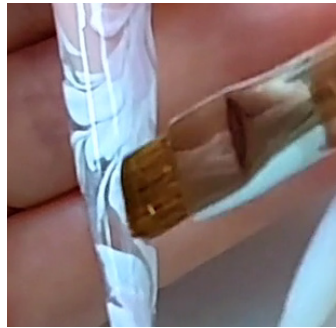
22 Cure when the design is complete.



23 Using clear builder gel, encapsulate the entire nail & design, keeping the product thin at the cuticle & edges, then cure.

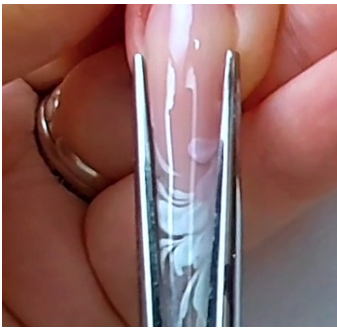


24 Apply another bead of clear gel. Float along the apex of the nail, all the way to the end of the extension & cure.



25 Apply a new bead of clear gel along the center of the nail for strength & structure, then fully cure.

THE C-CURVE



26 Pinch the C-curve into place.



27 Add a pinch clamp to hold the C-curve in position for longer.



28 Cleanse away the inhibition layer.

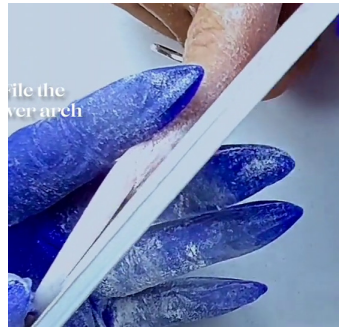


29 File the perimeter of the nail using a 180-grit file.

FILING THE STRUCTURE



30 File the surface of the nail, working from the outer edges & moving in towards the apex.

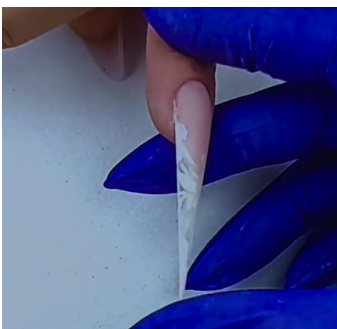


31 File the lower arch.

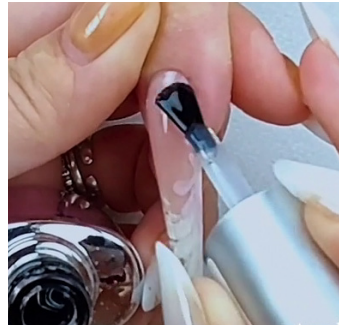


32 Buff the nail with the same movements used when filing. Then remove the dust with a firm manicure brush.

FINISHING



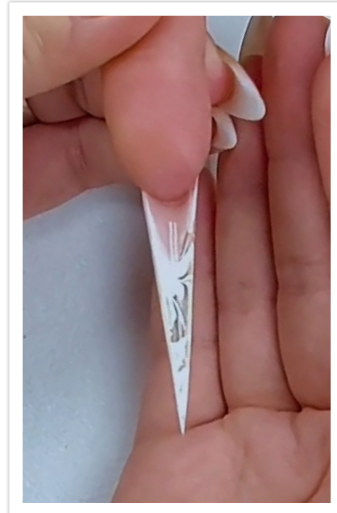
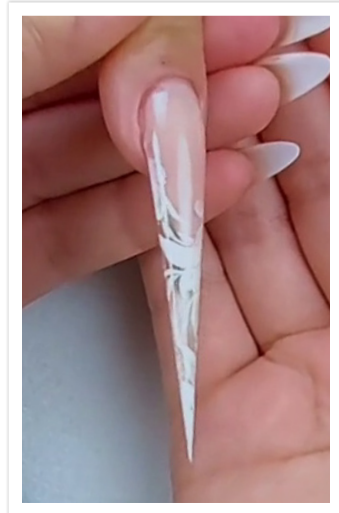
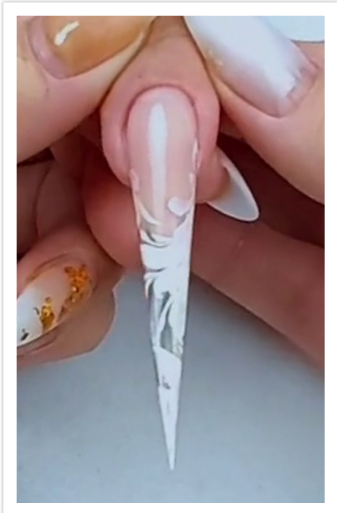
33 Clean the entire enhancement with a lint-free wipe & nail cleanser, including its underside.



34 Apply gel top coat & cure.



35 Apply a drop of cuticle oil & massage into the skin, eponychium & down the nail.



In this workbook you have learned how to carefully apply the LED gel product in order to minimize filing. The extension was carefully crafted with the structure and shape formed using the brush before curing. Using white builder gel, the clear nail extension was styled using swirls in white builder gel in 3 layers to give the illusion of depth. This inlaid design was then encapsulated in clear gel, filed & buffed before a UV top gel was applied to bring it to a high shine.