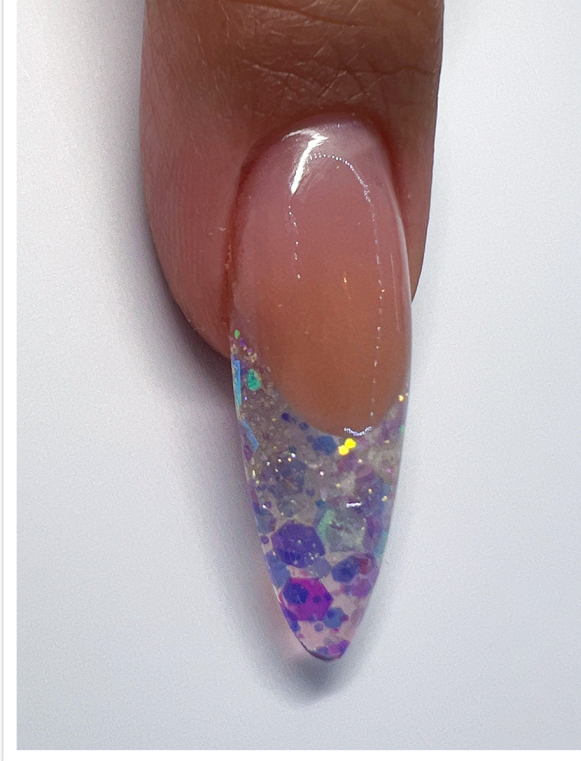


BACK to basics

EXTENDING THE NAIL PLATE



WHAT YOU NEED

Liquid & powder artificial nail system comprising cover pink powders and liquid monomer, acrylic brush, nail forms, dappen dish, lint-free wipes, nail prep, nail primer,

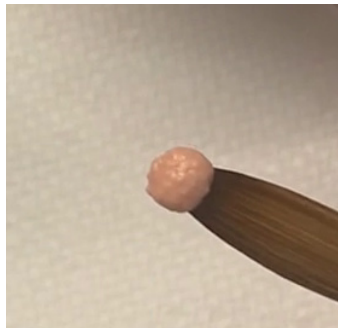
GETTING PREPARED

Prepare your table in an organized manner eliminating cross contamination from the products. Make sure all necessary products are within hand's reach, so the products are ready to use on the nail desk.

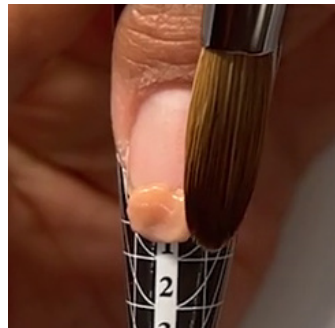
EXTEND THE NAIL PLATE



1 Prep natural nail, then tailor & apply the nail form.



2 Dip brush into monomer & pick up a small bead of the most opaque cover powder that fits the client's skin tone. Allow the bead to turn creamy, then dab off the excess liquid on a lint-free towel.



3 Apply the bead at the center where the form meets the fingernail. Conceal the white edge of the nail to elongate & extend the nail bed.

PRO TIPS

- The drier your beads are, the more opaque they will be, when working with cover powders.
- Ensure you customize the nail form, if needed, & the nail form is straight in line with the growth of the nail plate.

Alisha Rimando



Alisha Rimando is recognized as one of the nail industry's leading experts in training and education. In her 28 years experience, her work has been described as "ground-breaking" as she has been a platform artist and motivational speaker for thousands of promotional and educational events, and competed in hundreds of nail competitions around the globe winning the *World Nail Championship* in 2005 in *Pink and White Sculptured Nails*. She is the featured artist in many training videos, including hosting the current *Milady Standard Nail Technology* DVD Series.

Alisha's expertise and application techniques have been featured in more than 150 beauty and trade publications as a contributing author world wide such as *Teen Vogue*, *Bridal Guide*, *Self*, *Fitness*, and *Seventeen* magazines, as well as numerous industry trade magazines like *Nails*, *Nailpro*, *Scratch (UK)* and *Stylish Nail (Japan)*. Her career took an additional leap in 2008 as a contributing author to *Milady Nail Technology* and *Standard Cosmetology* textbooks, a consistent honor she engages with each new edition.

Through the years, Alisha has worked with R&D chemists to develop nail enhancement products, nano technology skincare, cuticle treatments, polish collections and natural nail treatments. Alisha's artistic creations have been sought after for numerous ads and campaigns as well as garnered celebrity status being featured with Jennifer Hudson in her video "Spotlight" and leading teams at NYC Fashion Weeks.

Her passion for educating the nail community takes her on another adventure with the conception and development of *GlossaryLive.com*



Alisha Rimando
GLOSSARYLIVE

USA

alisharimando.com

IG: @alisharimando

EXTENDING THE NAIL PLATE BY ALISHA RIMANDO



4 Pat the bead into place & blend into the natural nail.



5 Keep the product thicker at the new free edge as we are trying to conceal the natural nail's free edge. Use the side of the brush to shape the smile line.



6 Pick up a bead of pink cover powder & dry it out on the lint-free wipe.



7 Apply a small amount of cover pink at each corner of the nail.

PRO TIPS

- Keep the cover pink extension thick at the center to cover the natural smile line.
- Keep product thin at the sides, the cuticle & at the free edge. The thickest area of the nail is in the middle where you build your apex.



8 Press & blend the bead to cover the nail growth area.



9 Take a bead of cover pink that is a mid-way shade to the two previous beads & place at the demarcation line & blend into the natural nail. The three cover pinks should blend into each other nicely for a natural look.

PRO TIPS

- When using cover powders, if you can see the differences now, you will see them in the final look. So, ensure you blend the product evenly into the natural nail for a flawless finish.



10 Check the smile line & fill any holes with product.

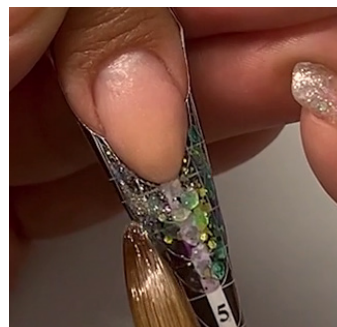
CREATE THE EXTENSION



11 Pick up a bead of glitter powder & place on the nail form to create the extension.



12 Follow the lines on the nail form & pat product into place to create desired length & shape of extension.



13 Place a bead of gold glitter powder at the edge of the smile line, pat into place & blend it down.



14 When the glitter beads are placed for the design. Move back to your sheer pink powder to encapsulate the design.

PRO TIPS

- Always keep a separate brush & dappen dish for glitter powders to prevent any contamination between your products.



15 Always keep a separate brush & dappen dish for glitter powders to prevent any contamination between your products.



16 Place another bead at the apex of the nail, then pat & blend it into place to create an even structure.



17 Place a bead at the cuticle line & pat it into place.



18 View the nail from the side to ensure the product is thin at the cuticle, tip & around the edges & thick at the apex.

PRO TIPS

- Keep the brush flat & parallel with the nail when applying liquid & powder.
- Make sure you work quickly so the product does not set before you get it into place.

MOLD THE C-CURVE



19 Using your thumbs, with elbows out, pinch the C-curve into place.



20 As the product sets, the form begins to move, so gently remove it.



21 Use a series of C-curve sticks & your fingers (heat from your fingers helps the process) to mold in the C-curve of the nail. Go down in sizes with your C-Curve sticks until you get the curve you require.

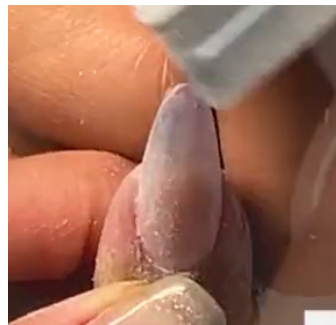
FILING THE STRUCTURE



22 File the sidewalls straight & the perimeter of the nail.



23 File the surface of the nail starting at the cuticle & work around the nail leaving the apex. Next buff the surface of the nail using the same motions as when you filed, don't entirely smooth the surface, keep it at 180-grit, so the nail can grab the LED gel top coat when it's applied.



24 View the nail from the client's perspective & refine the edges that need attention.



25 Use a thin 180-grit file to perfect the side groove.



26 Remove the dust with a stiff manicure brush.

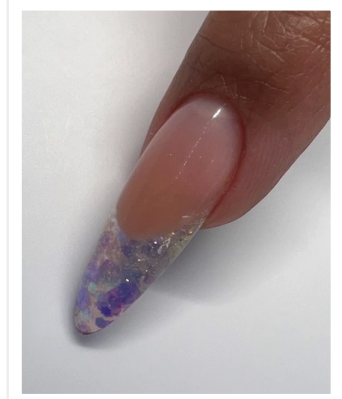
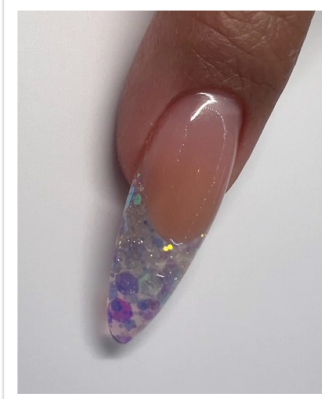


27 Apply top coat to the surface of the nail & underneath to give a glassy finish to the nail.

COMPARISON



FINAL RESULT



In this workbook you have learned how to extend bitten or short nail beds to create the base for a long nail look that is sheer and natural.