

# MASTER class

## OMBRÉ ARTISTRY



Giselle  
Caballero



Originally from Mexico City, Giselle Caballero married and moved to Kelowna, BC, Canada. Nails soon became her passion and she opened Ego Beauty Academy and Studio in 2015. Giselle teaches one-on-one trainings in the latest nail trends and offers bespoke services at the highest quality to her clients.

In 2020, Caballero won *NAILS Next Top Nail Artist* for Season 7. Giselle is currently a content creator working with some of the best brands out there and continues to teach, create and inspire. "I love the joy my work brings to others, whether it's bringing to life a new creation for my clients or guiding my students in class. It's amazing how the things that may seem little, can make such a huge difference in our lives, nails are my happy place!"

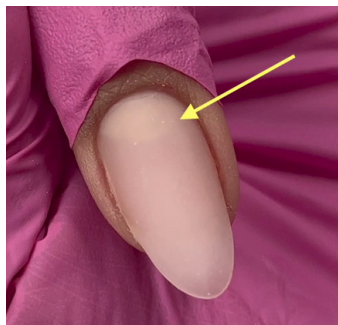
**WHAT YOU NEED**  
Art palette, orangewood stick, porous make-up sponge, airbrush gun & compressor, highly pigmented gel paint.

**GETTING PREPARED**  
Prepare your table in an organized manner eliminating cross contamination from the products. Make sure all necessary products are within hand's reach, so the products are ready to use on the nail desk.

## PREPARATION



**1** Use an opaque white gel paint or polish.



**2** File, buff & cleanse the nail enhancement that has been sculpted with a sheer/translucent pink. The pink is so sheer here, that you can still see the natural lunula showing through.



**3** Apply a small amount of the opaque white product onto the sponge.



**GISELLE CABALLERO**

Mexico & Canada  
egobeauty.ca

IG: @egobeauty.ca

## SPONGED OMBRÉ



**4** Dab the gel paint onto the tip of the nail & pack the product so the white looks quite concentrated in this area.

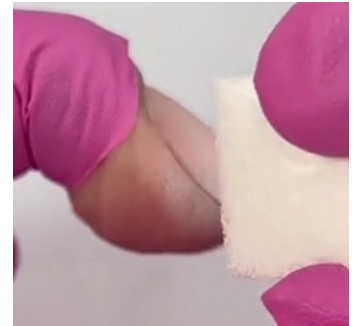


**5** Take a clean part of the sponge & dab the product towards the center of the nail, so it starts to blend out. The more you dab, the more the product will blend & the lighter the touch, the easier it will spread.



### PRO TIPS

- Using a sponge does add texture to the area, however this can be blended out by continuous dabbing with the sponge.



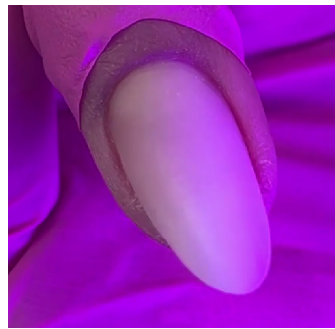
**6** Work the product & the sponge from side to side focusing on the tip & the middle section. Avoid dabbing the product into the cuticle area. Dab the sponge until all texture has been blended into a smooth fade.

### PRO TIPS

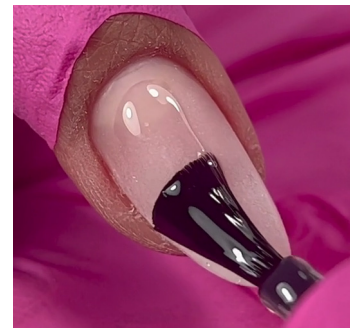
- When you use the sponge technique, dab as much as possible, as a few dabs will not help you achieve the desired result.



**7** Clean any excess product from the skin.



**8** When dabbing is complete & excess product removed, cure.



**9** Apply base coat & cure. A layer of gel polish base coat will blend the product & remove any extra texture not visible to the naked eye.



**10** Any remaining texture will be filled when the gel top coat is applied.



**11** A sponge ombre is easy to achieve & requires minimal product.

### PRO TIPS

- Float the base coat to avoid dragging any pigment.

## SPRAYED OMBRÉ



**12** Start by applying a layer of cured sheer gel polish.



**13** Use an airbrush that has the ability to work with gel polish.

### PRO TIPS

- Depending on the product you are using, you can use acetone, alcohol or a cleanser to remove any excess product from the airbrush.

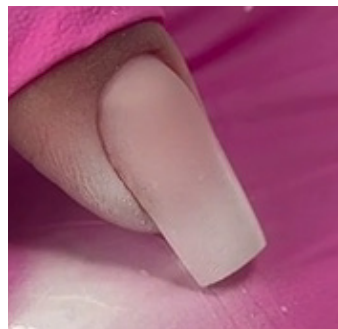


**14** Add gel polish to the airbrush cup. Gel polish is pigmented, so in an airbrush, less is more. A few drops of product will suffice. Place the cap on the cover before use to avoid spills.



### PRO TIPS

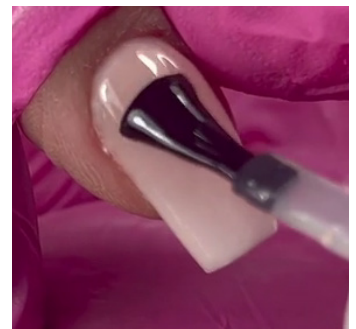
- Be gentle when using an airbrush. Pulling the lever too hard will make the product come out spotty. It is best to pull lever slowly for a smooth product application.



**15** Start at the tip of the nail & work your way back. Hold your airbrush further from the nail for a smooth application.



**16** Check for desired coverage & clean excess product off the skin & cure.



**17** An airbrush ombre leaves no texture on the nail, so apply gel top coat, by floating it onto the nail to avoid dragging any pigment across the nail.

### PRO TIPS

- The closer you are, the more pigment will show. The further away you are, will help the product spread.
- Getting client's to wear gloves during this service, keeps product from getting on the skin.

## FINAL LOOK – SIDE BY SIDE



In this workbook you have learned how to create an ombre French, also known as the baby boomer nail or French fade, a stylish nail design where the white tip blends into the back of the nail and merges into the pink. Creating this design is quite straightforward when working with liquid & powders beads, however it can be tricky when using the UV gel system. In this *Master Class*, Giselle presented two ways to solve this situation using the sponging and airbrushing techniques.