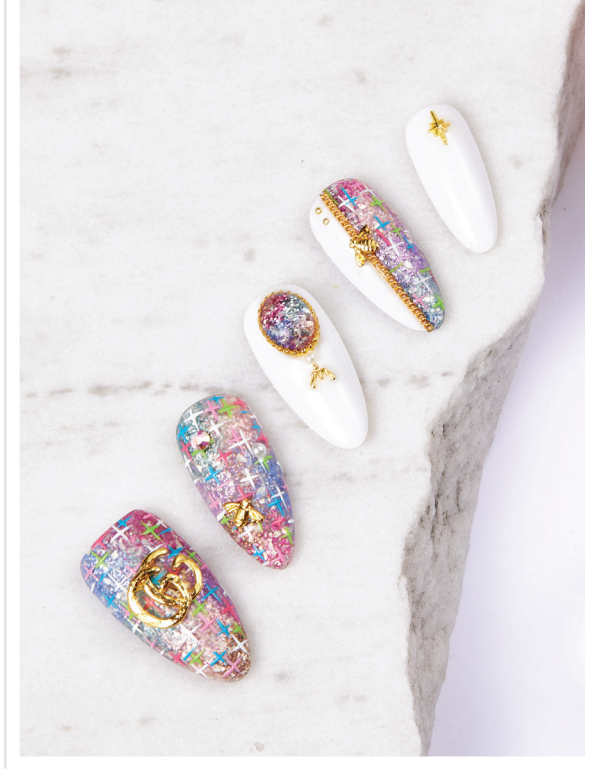


TAG THAT trend

GLITTER
RETRO TWEED



Kang A Hyeon



Kang A Hyeon has been in the nail industry since 2011. Since that time, Kang A Hyeon has worked as a nail technician at numerous salons before moving into the sphere of education and is now a qualified DGEL instructor. Currently, A Hyeon develops nail products and presents lectures at various colleges. More recently, A Hyeon has been working as an editorial nail artist for various magazines including NAILHOLIC in Seoul.

WHAT YOU NEED

File, DGEL Signature Base Gel, DGEL Mini Bold Non-Wipe Matte Top Gel, DGEL, Pumping Clear Gel (SIC), Aurora Queen Retro Collection Glitter Gel in AQ.121, AQ.122, AQ.123, AQ.124, AQ.125, AQ.128, DGEL x JINI Painting Color Gel in PJ001, PJ007, PJ012, PJ013, DGEL Disney Painting Gel (Minnie Mouse), DGEL Artist brush (02 liner, 03 liner), DGEL Gel Cleaner, DGEL Brush Cleaner, rhinestones, dust brush, DGEL LED Lamp

GETTING PREPARED

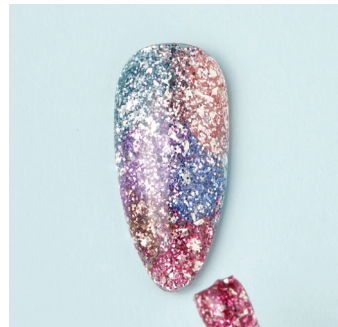
Prepare your table in an organized manner eliminating cross contamination from the products. Make sure all necessary products are within hand's reach, so the products are ready to use on the nail desk.



1 Prepare the nail tip to the shape of your choice.



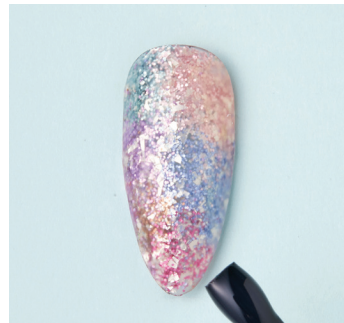
2 Apply Signature Base Gel & cure.



3 Marble the surface using AQ.121, AQ.122, AQ.123, AQ.124, AQ.125 & AQ.128 Glitter Gels, then cure.



4 Repeat step 3.



5 Apply Non-wipe Matte Top Gel & cure.



6 Start creating the tweed design using the PJ001 Painting Color Gel using the 03 liner brush & then cure.



KANG A HYEON

South Korea

IG: @dgel_korea
@educator_ahyeon

Credit: Editor: Park Sarah
Photography: Nam Juhyeong

TAG THAT *trend* GLITTER RETRO TWEED BY KANG A HYEON



7 Continue the tweed design using PJ013 Painting Color Gel using the 03 liner brush then cure.



8 Now use PJ012 pink Painting Gel with the 03 liner brush to build the tweed design & cure.



9 Keep building the layers of the tweed design using Disney Painting Gel in the Minnie Mouse shade using the 03 liner brush & cure.



10 Add white crosses for the tweed effect using PJ007 Painting Color Gel with an 03 liner brush & cure.



11 Complete the design by applying Pumping Clear Gel SIC using an 02 liner brush & add rhinestones & charms then cure.



In this workbook you have learned how to create a marbled background design using glitter effect gel polishes to give it dimension. Adding different colored crosses brings the tweed design to life and the adding of charms and rhinestones completes this elegant nail style.